



Los Angeles County Psychological Association's
34th Annual Convention
Rebuilding Community Through Collective Healing

Saturday, October 29, 2022
Held virtually via Zoom

Keynote Speaker:
Thema Bryant, Ph.D.
APA President-Elect
*Diverse Healing Pathways
for Sexual Trauma Survivors*

Morning Sessions

6.0 LIVE CEs Available

Student Circle

Moment of Merriment

**Poster & Honoree
Awards**

Happy Hour



Proud to be part of LACPA and Its Efforts to Support our Community

Rebuilding Community Through Collective Healing

Now More than Ever!



TRAUMA & BEYOND[®]
PSYCHOLOGICAL CENTER

Holistic Trauma Treatment Program for the integration of Mind & Body
PHP, IOP, OP

Now with Supportive Living, Athena House, call for more
informationinfo@traumaandbeyondcenter.com, 818-351-3511

Bel Air Home Residential Mental Health Treatment



One-to-One Treatment • Customized & Hybrid Treatment Approaches

Major Depression – Bipolar Disorder – Anxiety & Panic Disorders – Trauma & PTSD –
Delusional Disorders – Dissociative Disorders –
Obsessive Compulsive Disorders – Mood Disorders – Crisis Stabilization

Ketamine & Transcranial Magnetic Stimulation Treatment on site

888-818-7762. www.thebelairhome.com



LACPA is pleased to announce our 2022 Sponsors!

The Trust trustinsurance.com

EMDR emdr.com

Trauma & Beyond Psychological Center traumaandbeyondcenter.com

Insight Treatment Programs insighttreatment.com

ZUR Institute zurinstitute.com

Sport Psychology by Carrie Hastings sportpsychologywlv.com

Psychological Care Institute Centers pcicenters.com/

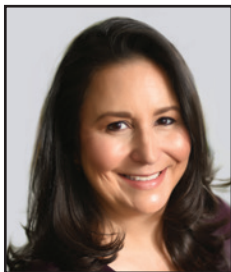
Eating Disorder Therapy LA eatingdisordertherapyla.com

LACPA Foundation lacpa-foundation.squarespace.com

Karen Shore Ph.D., ABPP, CGP 310-490-7601

The Affirmative Couch affirmativecouch.com

DBT Associates of Southern California - Cheryl A. Kempinsky, Ph.D. LACDBT.com



Lauren Muhlheim, Psy.D.

Dear Esteemed Colleagues,

Welcome to the Los Angeles County Psychological Association's 34th Annual Convention, and our third virtual Convention! We are delighted you are joining us today to connect with your professional community and enjoy a day of learning and inspiration. We hope that you're able to feel today's theme, "Re-building Community Through Collective Healing," as you move throughout your day. We also hope that you are able to experience moments of joy and fulfillment that bring a genuine smile to your face.

During our two morning sessions we hope you enjoy our selection of presentations by experts, featuring a diverse array of professionally-relevant topics such as cumulative family trauma, intercultural couples, mind-body health connection, anti-racism in group work, culturally-informed mindfulness, suicide bereavement, child assessment, and serving Latinx communities. Additionally, our morning sessions will include a Student Circle focusing on discussing the transition from student to professional. We believe there is something for everyone, and we have given you much to choose from with four presentations per session. While we know that deciding may be difficult, it is our hope that you are excited by the abundance of options!



Jaz Robbins, Psy.D., BCHN®

Our two morning sessions will be followed by a one-hour lunch break that includes the following virtual offerings: *A Moment of Merriment* and Poster Presentations. The first is a brief arts presentation showcasing the works of various therapists who are also performing artists. The latter is a virtual presentation of this year's poster series. Our awards ceremony, which includes the LACPA Foundation Awards and the 2022 LACPA Awards, will be pre-recorded and available to watch at your convenience.



Bennie Harris, B.A.

Following the break, we will be treated to our distinguished keynote speaker, APA President-Elect, Dr. Thema Bryant. Dr. Bryant is a licensed clinical psychologist, tenured professor at Pepperdine University, and a trauma specialist. Her presentation, *Diverse Healing Pathways for Sexual Trauma Survivors*, will outline the integration of culture and spirituality in sexual trauma recovery.

Following the conclusion of our keynote presentation all attendees are cordially invited to our Virtual Happy Hour event to mingle, network, and discuss the day's events. Dr. Bryant has graciously agreed to join us for the first fifteen minutes should you be interested in connecting with her.

Each year, a dedicated team of volunteers works hard to make the Convention enjoyable for all, and this year the team rose to the challenge of creating a robust event that felt welcoming in this virtual format. We extend our sincere thanks to all of today's

Continued on next page

Continued from previous page

presenters. We are additionally grateful for the hard work of the LACPA Convention Committee, the LACPA Foundation, the LACPA Board of Directors, and our volunteers. Our heartfelt thanks also go out to LACPA staff Carol Torcello, Rebekah Finch, M.A., (Directors of Operations) and Adriene Ghiasian, B.A. (Operations Assistant) for their dedicated efforts. Finally, we want to express our gratitude to our sponsors and advertisers for their generous support of this event.

LACPA's 2022 Convention Committee

Rebekah Finch, M.A.
Adriene Ghiasian, B.A.
Bennie Harris, B.A.

James Kalivas, Psy.D.
Rachel Kavanaugh, Psy.D.
David Laramie, Ph.D.

Jaz Robbins, Psy.D., BCHN®
Richard Sherman, Ph.D.
Carol Torcello

UPCOMING LACPA CE PROGRAMS

For complete bios, information, and online registration go to
www.LACPA.org>>Programs>>Continuing Education Programs>>Virtual CE Programs



Current Perspectives on Clinical Supervision

This 6.0 hour course fulfills the supervision regulations required in the state of California.

Saturday, November 5, 2022 Via Zoom 9:00 AM - 4:00 PM PT

Presented by Carol Falender, Ph.D.

Intermediate Level - 6.0 Live CE Credits - Will NOT be recorded

New Directions in Assessment and Biofeedback/Neurofeedback Training for ADHD, ASD, Anxiety, and Concussions



Saturday, December 10th, 2022 Via Zoom 9:00 AM- 1:00 PM PT

Presented by Michael Linden, Ph.D., Kyle Nixon, Ph.D.

Intermediate Level - 4.0 Live CE Credits - Will be recorded

This course is co-sponsored by the Los Angeles County Psychological Association and The Trust.

Sequence X: Perplexing Problems in Psychological Practice: Decision Science, Ethics & Risk Management



Saturday, January 28, 2023 Via Zoom 9:00 AM - 4:00 PM PT

Presented by Daniel O. Taube, J.D., Ph.D.

**Intermediate Level - 6.0 Live Ethics CE Credits - 15% off your Trust Sponsored
Professional Liability Policy premium (for 2 consecutive years at policy renewal) - Will NOT be recorded**

The Los Angeles County Psychological Association (LACPA) is approved by the American Psychological Association to sponsor continuing education for psychologists. LACPA maintains responsibility for this program and its content.

This presentation may be taken to satisfy the California Board of Behavioral Sciences (BBS) continuing education requirements.

View Our [Welcome Video](#)
on Convention Day of Home Page

FEATURED SPEAKER

Current president-elect of the American Psychological Association, **Dr. Thema Bryant** is nationally sought-after for her expertise in diversity, multiculturalism, and trauma research. She is a tenured professor of psychology at Pepperdine University and is the supervising director of the Culture and Trauma Research Laboratory at the university. She has authored and/or co-authored more than 50 publications including her book, *Thriving in the Wake of Trauma: a Multicultural Guide*, and has facilitated over 70 presentations and workshops nationally and internationally. Dr. Bryant's clinical and research interests center on interpersonal trauma and the societal trauma of oppression. She provides national and international training on trauma recovery for marginalized communities, embodied psychotherapy, spiritual integration in psychotherapy, and liberation psychology.



Dr. Bryant has held many leadership positions within APA throughout her career. She is a past president of the Society for the Psychology of Women and a past APA representative to the United Nations. Dr. Bryant was a part of the first APA team to serve at the United Nations and within her tenure she contributed to the APA Resolution on Racism and Racial Discrimination. Dr. Bryant also chaired the APA Committee on International Relations in Psychology and served on the Committee on Women in Psychology.

CONVENTION EVENTS

Sessions I, II, and III;
Access to Posters; Awards Lunch Break;
Moment of Merriment;
Post Convention Happy Hour

Date and presenters are subject to change.

The Los Angeles County Psychological Association (LACPA) is approved by the American Psychological Association to sponsor continuing education for psychologists. LACPA maintains responsibility for this program and its content.

These sessions may be taken to satisfy the California Board of Behavioral Sciences (BBS) continuing education requirements.

LACPA's 34th Annual Convention will operate under the guidelines of an APA-Approved sponsor of continuing education. All licensees are responsible for maintaining records of completed continuing education courses. LACPA supplies a Document of Attendance via email within two weeks of the Convention, that certifies the licensee was present for the entire program and earned the continuing education credits by, signing-in and out, with their name and license number, of each presentation via the Zoom Chat to Everyone. If you do not see your name in the Chat box, we cannot see your name either.

It is important to note that APA continuing education rules require that LACPA only give credit to those who attend the entire workshop. Those who arrive more than 15 minutes after the scheduled start time or leave before the workshop is completed will not receive CE credit. Partial credit may not be given.

Los Angeles County Psychological Association
6345 Balboa Boulevard, Suite 126
Encino, CA 91316
Phone 818-905-0410 Fax 818-332-4949
Lacpa1@gmail.com www.lacpa.org

The Los Angeles County Psychological Association is grateful to the LACPA Foundation for its financial contribution of the Poster Awards.

Cover by David Ilan of Galileo Graphics

Convention Schedule

Saturday, October 29, 2022

Virtually via Zoom

Times and events are subject to change

Session I
2.0 CE Credits all courses
unless noted otherwise
8:30 -10:30 a.m. PT

Interrupting Emerging Cumulative Trauma Within Family Systems

Course Level: Intermediate

The presentation distinguishes between single episodic traumatic events resulting in PTSD diagnosis per DSM V, and the development of Cumulative Trauma states experienced by family members in family systems where substance abuse or mental illness exists. When misdiagnosed these untreated states remain potentially harmful legacies within families and society.



Katrina Wood, Ph.D., clinical psychologist, is the founder of Wilshire Valley Therapy Centers, serving the L.A. community since 1993. Born and educated in UK/US, specializing in trauma, she is the author of *That's Not What I Said*,

available on Amazon and Barnes & Noble. Her blog is titled www.healingpsych.com. She lectures frequently and has many articles published in the field of psychology. Dr. Wood writes music in her spare time.

Mirrors of the Mind 11:
The Psychotherapist as Artist,
From Chaos to Coherence
Virtual Art Opening November 20th 2022

Learn more here:
<https://lacpa.memberclicks.net/mirrors>

Helping Intercultural Couples Attune, Change, and Liberate

Course Level: Advanced

Intercultural couples experience more stressors and are at higher risk for discord and divorce. As a step toward collective healing, therapists can help partners effectively navigate the sociocultural differences in their intimate relationships. Learn how to foster sociocultural attunement, change, acceptance of differences, and liberation from self- and partner-blame.



Kathleen Eldridge, Ph.D., is a Full Professor at Pepperdine University in the Graduate School of Education and Psychology and a clinical psychologist. She teaches graduate courses in couple and family therapy, cognitive-behavior therapy, and mindfulness/acceptance processes. Recent publications include journal articles on working with intercultural couples and on client perceptions of the most and least helpful aspects of couple therapy.

How to Heal: Neuroscience and Our Nervous Systems

Course Level: Intermediate

In this interactive workshop, participants will learn about the science and practice of the mind-body health connection. Participants will engage in hands-on activities to apply techniques for vagal nerve stimulation and stress management, including: diaphragmatic breathing, EFT-based energy tapping, EMDR-bilateral tapping, chair yoga, values journaling, and havening touch.



Monica Blied, Ph.D., MACL, is a clinical psychologist in private practice, adjunct professor at Pepperdine, wife, mother of 3, and 10-year lupus warrior. Specializing in providing integrative care centered upon the mind-body health connection, Dr. Blied recently launched the "My Health in My Hands" mobile app, which teaches neuroscience-based skills to reduce stress. Learn more at www.drblied.com/app.

Anti-racist Group Therapy Principles and Strategies

Course Level: Intermediate

Despite hopes to create safe spaces, for many patients and practitioners of color, group therapy is another setting for marginalization. To avoid causing deep harm, racist behaviors must be addressed effectively. This workshop will teach practitioners how to identify, understand, and intervene following microaggressions in group and individual therapy.



Faria Kamal, Ph.D., is a psychologist and Assistant Professor of Medical Psychology at Columbia University Medical Center. She provides evidence-based therapy to children, adolescents, adults, and families. Her research on underserved communities has been published in peer-reviewed journals and presented at numerous academic conferences. In addition, she provides consultation to teams internationally on DEI and anti-racist practices in therapy.



Marcus Rodriguez, Ph.D., is the Founder and Director of the Youth and Family Institute and Assistant Professor of Psychology at Pitzer College. He specializes in Dialectical Behavioral Therapy (DBT) and consults for Behavioral Tech (BTECH). Having grown up in Mexico and lived in China for nine years, he provides training to mental health professionals internationally in Spanish and Mandarin.

LACPA ON-DEMAND PROGRAMS
We have over 40 options to choose from!
CE Programs, 2022 LACPA Lunch & Learns, Special Interest Group Meetings, and LACPA's 2020 and 2021 Convention Presentations.

Visit our website at www.lacpa.org
Go to>> Programs>>Continuing Education Programs>>
On Demand Programs

STUDENT CIRCLE: “Transitioning from Student to Professional”

No CE Credits Available

This workshop will give current master's and doctoral students insight into the mindset shift required to close the chapter on student life as they walk into their new professional identities. The event's moderator and panel are in the process of successfully navigating this shift.



Jaz Robbins, Psy.D., BCHN®, earned her Doctor of Psychology from Pepperdine University in August 2022. She is a nutritionist, an instructor of graduate courses at Pepperdine and UCLA Extension, a published author, and a nonprofit founder. As a postdoctoral fellow, Ms. Robbins will work in the field of health psychology where she will integrate her expertise in nutrition with traditional mental health interventions.



Bennie Harris, B.A., is a Doctoral Candidate and field placement intern working under supervision at the Kieffer E. Frantz Clinic, of the C.G. Jung Institute in Los Angeles.

Mai Breech, Psy.D., is a therapist, lecturer, and artist. Her area of therapeutic focus and research is on childhood developmental trauma and attachment. Dr. Breech is also a mandala artist. She is currently in private practice working with children and adults in West Los Angeles. Dr. Breech received her Psy.D. from Pacifica Graduate Institute.



Amanda Lipari, Psy.D., LCSW recently completed her doctorate in clinical psychology at Pepperdine University. She is currently a Psychology Resident at the Phoenix VAHCS in the PTSD Clinic. Dr. Lipari's clinical areas of focus include trauma-related disorders, substance use, and serious mental illness. Additional interests include play therapy and clinical supervision.



Fox MacLachlan, M.A., is an inclusive, 2SLGBTQIA+ affirmative and culturally responsive Sex-Positive Coach — and soon to be Sex & Relationship Therapist. Fox is passionate about working with all relationship structures and lifestyles and believes that pleasure, joy, and embodiment are acts of radical liberation. She loves empowering people to heal holistically. SexTalkwithFox.com



Session II

2.0 CE Credits for all courses

11:00 a.m. – 1:00 p.m. PT

Sociocultural Considerations in Mindfulness and Compassion Interventions

Course Level: Intermediate

Mindfulness and compassion have emerged as areas of focus in psychotherapy. Effective application with Black, Indigenous, and People of Color (BIPOC) requires attention to sociocultural factors such as cultural identity and values, racial/cultural trauma, and the dynamics of intersectional oppression. Cultural and sociopolitical dimensions of mindfulness and compassion will be explored with implications for psychotherapy and community interventions.



Shelly P. Harrell, Ph.D., is a Professor at Pepperdine University. She has published and presented extensively on sociocultural and sociopolitical aspects of stress and well-being, cultural competence, and Black mental health. Her current work focuses on culturally-responsive contemplative practices and “soulfulness” interventions to facilitate resilience and liberation. She is a psychotherapist, meditation teacher, and consultant with 30+ years of experience with individuals, groups, and organizations.

Effective Treatment with the Suicide Bereaved

Course Level: Advanced

In this training, Dr. Gutin will describe the unique aspects of grief following a suicide loss, and how this experience may vary within different cultures and demographic groups (including mental health professionals). She will provide guidelines for effective treatment for those loss survivors who seek clinical support.



Nina J. Gutin, Ph.D., a clinical psychologist in Pasadena, California, conducts trainings in Suicide Prevention/Postvention, facilitates “Survivors After Suicide” groups for the Didi Hirsch Suicide Prevention Center, and is a member of the L.A. Suicide Prevention Network. She is co-chair of the Coalition of Clinician-Survivors, which supports clinicians after personal/professional suicide losses, and has published several articles about Suicide Postvention.

Social Responsibility in the Neuropsychological Evaluation of Diverse Children

Course Level: Advanced

Culturally and linguistically diverse children experience similar rates of neurodevelopmental disorders than their peers and are routinely underdiagnosed or misdiagnosed. This presentation will address strategies to improve the validity of neuropsychological evaluation with culturally and linguistically diverse children, particularly bilingual children, as well as ways to expand the role of the neuropsychologist and advocate for marginalized youth.



Vindia Fernandez, Ph.D., is a pediatric neuropsychologist with specialty training in neurodevelopmental issues including autism, epilepsy, ADHD, and learning. In 2017, Dr. Fernandez founded the Center for Pediatric Neuropsychology to address the growing need for culturally and linguistically appropriate evaluations for Latinola children. She is also the director of pediatric neuropsychology at the UCLA Hispanic Neuropsychiatric Center of Excellence.



Alberto A. Miranda, Psy.D., is director of training at the UCLA Hispanic Neuropsychiatric Center of Excellence. His clinical interests are in the application of cultural neuropsychology, where he provides specialized training in the assessment of monolingual and bilingual Hispanic patients across the lifespan. He conducts neuropsychological/psychodiagnostic evaluations for presurgical candidacy, differential diagnosis of dementia, and diagnostic clarification of neuropsychiatric/ neurodevelopmental disorders.

Lunch & Learn

Join us for LACPA's 2023 Lunch And Learn Series
A FREE Member Benefit!

Fridays (Virtual & Hybrid/In-Person Options) 12-1:30 PM PT
1.5 Live CE Credits

2023 Topics include:

- Evidence-Based Treatment of Substance Use Disorders with Rubin Khoddam, Ph.D. on 3/14/23
- VA Mental Health Apps: Resources for Everyone with Andrea L. Jamison, Ph.D. on 4/14/23
- Parental Fostering of Early Childhood Affect Integration with Claudia Kohner, Ph.D. & Faye Weinstein, Ph.D. on 5/12/23
- Introduction to Emotionally Focused Couples Therapy with Silvina Irwin, Ph.D. on 6/9/23

For more information or to register, Click here:
<https://lacpa.memberclicks.net/2023-lunch-and-learn-series>

2022 LACPA CONVENTION

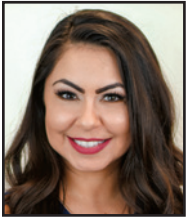
REBUILDING COMMUNITY THROUGH COLLECTIVE HEALING

LACPA
LOS ANGELES COUNTY
PSYCHOLOGICAL ASSOCIATION

Strengthening Latinx Identity in Culturally Competent Therapy

Course Level: Advanced

Latinxs are undergoing a racial crisis, given the current racially charged sociopolitical climate; making it imperative to increase cross-cultural skills to serve the largest, fastest-growing ethnic group, specifically in Los Angeles. This course was designed to increase participants' knowledge and skills in strength-based culturally competent care for Latinx.



Anita Mihecoby, Ph.D., is licensed by the California Board of Psychology. She established the Conscious Culture Psychology Clinic in Los Angeles serving diverse populations. Her specialties include stress disorders and working with marginalized and underserved populations. Her research interests include multicultural psychology, Indigenous Ways of Knowing, cultural and behavioral health integrative programs, and mentorship. She enjoys supervision and program development.



Claudia Ocholski, M.A., is a graduate student at Nova Southeastern University, studying clinical psychology. She is a research intern under Dr. Anita Mihecoby, examining Mexican American identity. Her specialties include first-generation immigrants, crisis intervention, and working with underserved populations. Her research interests include multicultural psychology and removing the stigma attached to mental health issues. She enjoys conducting research.

Our Award Winning magazine, The Los Angeles Psychologist is seeking scholarly articles! Find out more here <https://lacpa.memberclicks.net/call-for-articles>



GRAPHIC DESIGN FOR PSYCHOLOGISTS

818-389-5283
www.galileo1.com david@galileo1.com

Lunch Break 1:00 – 2:30 p.m. PT

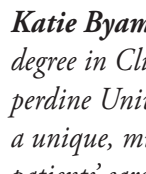
LACPA Awards and Poster Presentations

Moment of Merriment: (1:15 - 1:45 p.m. PT)

LACPA is excited to offer this brief moment of respite, joy, and inspiration. Our *Moment* will feature the vocal stylings of Diana Hereld, M.A. as well as a moving dance performed by Dr. Thema Bryant. We invite you to join us as there are other surprise artists whose works we are thrilled to share.



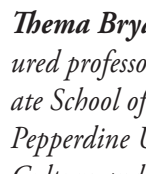
Diana Hereld, M.A.'s clinical and research interests include epilepsy and pre-operative neuropsychological evaluations, music interventions in affect regulation and rehabilitation, and improving health inequities in Native and Indigenous populations.



Katie Byam (RYN) is earning her master's degree in Clinical Psychology from Pepperdine University, where she's developing a unique, music-infused approach for her patients' care.



Jaz Robbins, Psy.D., BCHN[®] is a poet and stage performer who finds joy in incorporating expressive arts interventions into her work with clients when appropriate.



Thema Bryant, Ph.D. is currently a tenured professor of psychology in the Graduate School of Education and Psychology at Pepperdine University, where she directs the Culture and Trauma Research Laboratory.



Karen Godinez Gonzales, Ph.D., is passionate about incorporating collective healing into her work and is strongly committed to challenging oppressive systems impacting the client's holistic well-being.

Awards Presentation

View the YouTube of the presentations at your convenience.

Click [HERE](#) to View Our 2022 Honorees Receiving their Awards

LACPA's 2022 Awardees

LACPA Poster Awards



Distinguished Legislative Award

Senator Rosilicie Ochoa Bogh

Rosilicie Ochoa Bogh (R- Yucaipa) is a native Californian born to Mexican immigrants. Senator Ochoa Bogh credits her family with teaching her personal responsibility, the value of an education and hard work, and that home ownership is the cornerstone of the American Dream.

She attended San Bernardino High School and the University of California, Santa Barbara, before teaching English language learners at the elementary school level. She went on to become a licensed real estate agent and was a realtor for 18 years. She served on the Yucaipa-Calimesa Joint Unified School Board, was a former board Chairwoman/President of the Yucaipa Valley Chamber of Commerce and was a former board member of the East Valley Association of Realtors. She was elected to the California State Senate in 2020 and began her term on December 7, 2020.

In November 2020, Ochoa Bogh was elected to represent the nearly one million people of California's Senate District 23.

In her short time in the California State Senate,

Senator Ochoa Bogh has done much to advance the cause of mental health and wellbeing in California. Among the bills she has authored or co-authored:

- SB-1427 (2021-2022), which creates two grant programs to get individuals with mental illness and homeless individuals the mental health care they need and to promote rehabilitation and housing stability
- SB-1298 (2021-2022), which appropriates \$1 billion dollars to fund the Behavioral Health Continuum Infrastructure Program, which would allow the State Department of Health Services to rehabilitate real estate assets and create mobile crisis infrastructure to increase access to mental health facilities
- SB-720 (2021-2022), which increases the amount of funds immediately available to domestic violence shelters when receiving state grants
- Coauthored SB-1428 (2021-2022), which expands the use of psychological testing technicians for psychological testing

Taken as a whole, Sen. Ochoa Bogh has been a strident advocate for increased and improved access to mental health services in California. Senator Ochoa Bogh and Greg Bogh, her husband of 26 years, live with their son, two daughters and a Cocker Spaniel named Penny in the city of Yucaipa.

Bio submitted by Natalie Feinblatt, Psy.D.

Join LACPA's Special Interest Groups (SIGs)! Current SIGs: Assessments, Child & Adolescents, Depth Psychology, Divorce/Separation/Reconfigured Families, Neurocognitive Disorders, Sexuality & Sex-Therapy, Sport & Performance Psychology, Trauma & Trauma Therapy, Conscious Aging and Ecopsychology; Learn More here: <https://lacpa.memberclicks.net/special-interest-groups-sig->



Distinguished Service to LACPA by a LACPA Member

Gretchen Kubacky, Psy.D.

Dr. Gretchen Kubacky is LACPA’s recipient of the 2022 Award for Distinguished Service to LACPA by a LACPA member.

Dr. Kubacky joined LACPA in 2008. Since then, she has presented on numerous topics at many LACPA events, including Brown Bags, Conventions, Special Interest Groups, and membership gatherings. Additionally, she has guest-edited two special issues of *The Los Angeles Psychologist*, on the topics of Health Psychology (2012) and Feminist Psychology (2013). Dr. Kubacky served on LACPA’s Board of Directors from 2011-2014 and 2019-2022. She has served on the Executive Committee as Treasurer. Most recently, she has brought patience, wit, insight, and creativity to her job as Editor of *The Los Angeles Psychologist*. The timeliness and relevance of the publication has grown under her editorship.

Dr. Kubacky received her BA from Scripps College and her Psy.D. from Ryokan College, after leaving a first career in the insurance field. Her business expertise has proved very helpful to LACPA’s office in matters relating to operations and real estate. She now maintains a busy private practice, specializing in health psychology and grief/loss. She also consults, speaks at the local and national level and has published two books in recent years.

Gretchen Kubacky is a devoted LACPA member, but she’s also a great person. She brings intelligence, humor, vivacity, panache, and solid common sense to everything she does. (I might add that she is an exceptional cook.) As a LACPA leader, she sets a great example for distinguished service to our professional organization.

Congratulations, Dr. Kubacky!

Bio Submitted by Beth Leedham, Ph.D. & John Geirland, Ph.D.



Lifetime Achievement Award

Carol Torcello

Carol Torcello, LACPA’s former director, was recognized with the Presidential Award. She retired in July 2022. This Presidential Award recognizes her 31 years of distinguished service.

Carol was born and raised in Salamanca, NY, a small city nestled in the valley of the Alleghany Mountains, located on the Seneca/Iroquois Reservation. She received an A.S. degree from Genesee Community College in Batavia, NY. She met her husband John in 1977, married in 1978, and moved to California in 1979. She worked at a post-production facility in Burbank until her son was born in 1985.

Carol joined LACPA at the same time as Pat Fricker, the previous executive director, in August 1991. Pat assumed the director’s role and recruited Carol for a part-time position to help her. Back in 1991, LACPA did not have its own office, instead renting space from a past president. There were about 650 to 700 members at that time. In 1999, Pat and Carol moved to LACPA’s first official office space. It was from here that they oversaw the growth of the organization to 1,300 members, its height in membership. They moved LACPA to its current office in 2015. Pat died in 2017, and since then Carol has served LACPA as operations director.

Carol has been the face of LACPA—the one who answers the phone or email when you contact LACPA and the one who greets you at the Convention—for so many years. She is an amazing memory bank of LACPA’s history. She can tell you who spoke when, which president started what, and how long you have been a member. It is hard for me to imagine LACPA without Carol, and I am sure any of you who have interacted with Carol share the same view. I know I will miss working with her.

Bio submitted by Lauren Muhlheim, Psy.D.

MEMBERSHIP in LACPA includes GREAT benefits: <https://lacpa.memberclicks.net/membership-benefits>

Session III
2.0 CE Credits
2:30 – 4:30 p.m. PT

Diverse Healing Pathways for Sexual Trauma Survivors

Course Level: Intermediate

Sexual trauma may affect survivors' emotionally, cognitively, socially, physically, financially, and spiritually. Interventions will be explored which have been found to decrease distress and enhance well-being among survivors. This presentation will attend to culture and spirituality, while also providing an overview of both commonly used interventions and innovative less-known interventions.



Thema Bryant, Ph.D., current president-elect of the American Psychological Association, is nationally sought-after for her expertise in diversity, multiculturalism, and trauma research. She is a tenured professor of psychology at Pepperdine University and is the supervising director of the Culture and Trauma Research Laboratory at the university. She has authored and/or co-authored more than 50 publications including her latest book, Homecoming, and has facilitated over 70 presentations and workshops nationally and internationally. Dr. Bryant's clinical and research interests center on interpersonal trauma and the societal trauma of oppression. She provides national and international training on trauma recovery for marginalized communities, embodied psychotherapy, spiritual integration in psychotherapy, and liberation psychology.

Virtual Happy Hour
4:45 – 5:45 p.m. PT

Dr. Thema Bryant will take part in our Happy Hour.

[Please join us!](#)

Congratulations to
Gretchen Kubacky, Psy.D.
on her *Distinguished Service to LACPA Award* by a LACPA member

and to

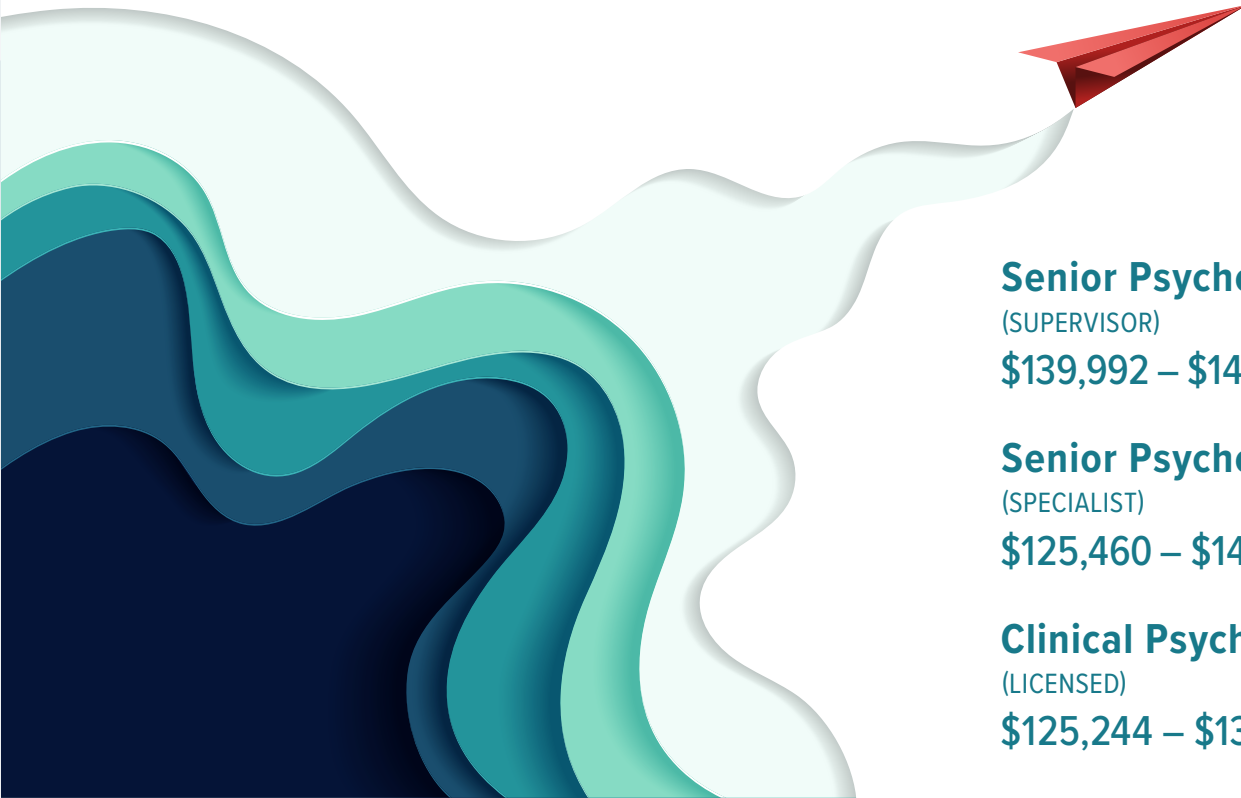
Carol Torcello
on her *Lifetime Achievement to LACPA Award*

From the 2022 LACPA Board of Directors:

Natalie Feinblatt, Psy.D.
Bruce Gale, Ph.D.
Stephanie Haibloom, Psy.D.
Beth Leedham, Ph.D.
Nazanin Moali, Ph.D., CST
Lauren Muhlheim, Psy.D.
Cris Scaglione, Ph.D.
Kenneth Skale, Psy.D.

If you want to transform lives...

You belong here.



Senior Psychologists

(SUPERVISOR)

\$139,992 – \$149,868

Senior Psychologists

(SPECIALIST)

\$125,460 – \$146,796

Clinical Psychologists

(LICENSED)

\$125,244 – \$139,812

Clinical Psychologists

(PRE-LICENSED)

\$106,104 – \$115,332

Some of the great State employee benefits include:

- 40-hour workweek
- State of California retirement that vests in five years (visit CalPERS.ca.gov for retirement formulas)
- Generous paid vacation and holiday schedule
- 401(k) and 457(b) plans (tax defer up to \$41k – \$54k per year)
- Paid CEUs with paid time off to attend

With locations throughout California, there's one that's right for you. Take the first step and submit your CV:

CentralizedHiringUnit@cdcr.ca.gov or
apply online at **www.cchcs.ca.gov**.

 CALIFORNIA CORRECTIONAL
HEALTH CARE SERVICES



EOE  

**LACPA**
LOS ANGELES COUNTY
PSYCHOLOGICAL ASSOCIATION

2022 LACPA CONVENTION

REBUILDING COMMUNITY THROUGH COLLECTIVE HEALING

LACPA 2022 POSTER WINNERS!



First Place
Michael Liu, B.S.

The advisor for this research:

Dr. Jennifer Abe

of Loyola Marymount
University

Michael's poster title:

*Exploring Resilience in
College Students*



Second Place
Yazmin Ortiz, B.A.

The advisor for this research:

Stephen Nettelhorst, Ph.D.

of Woodbury University

Yazmin's poster title:

*Effects of Gender Identity
and Masculinity on
Fear of Intimacy*



Third Place
Skylor Dunn-Ford, B.S.

The advisor for this research:

Gina Coffee, Ph.D., NCSP

of Pepperdine University, Graduate
School of Education & Psychology

Skylor's poster title:

*He Can Work it Out: Understanding the
Intersection of African American People,
Spirituality, and Mental Health*

LACPA and the LACPA Foundation congratulate this year's winners and thank them for the time and energy given to their participation in the 2022 LACPA Poster Session.

Please take a moment to visit all the posters submitted for the Convention Poster Session at the LACPA website at <https://lacpa.memberclicks.net/2022-convention-poster-session>



ZUR
INSTITUTE

***All LACPA members and attendees enjoy 15% off
any of our 125 CE courses & upcoming webinars***

Use code LACPA15*

***Check out our certificate programs,
Private Practice forms, and HIPAA Compliance kit.***

****good through Dec, 31st, 2022. Cannot be used with other discounts.***

LACPA Announces our 2022 Convention Poster Presenters

With the Convention being virtual again this year, the presenters created a brief PowerPoint presentation that is available to view via the LACPA Website [HERE](#).

First Author Name: Sabrina Barrett, B.S.
Name of University: Pepperdine University, Graduate School of Education & Psychology
University Adviser for this research:
Gina Coffee, Ph.D., NCSP
The Efficacy of Dialectical Behavior Therapy for The Treatment of Eating Disorders

First Author Name: Tracy Dubin, M.A.
Name of University: West Los Angeles College
University Adviser for this research:
Psychology Professor Milan Suzuki
The Effects of the Coronavirus Disease of 2019 (COVID-19) Impacting Motivation

First Author Name: Skylor Dunn-Ford, B.S.
Name of University: Pepperdine University, Graduate School of Education & Psychology
University Adviser for this research:
Gina Coffee, Ph.D., NCSP
He Can Work it Out: Understanding the Intersection of African American People, Spirituality, and Mental Health

First Author Name: Michael Liu, B.S.
Name of University: Loyola Marymount University
University Adviser for this research:
Dr. Jennifer Abe
Exploring Resilience in College Students

First Author Name: Melissa Lomas-Deafenbaugh, B.A.
Name of University: Pepperdine University, Graduate School of Education & Psychology
University Adviser for this research:
Antonio Romaguera, Ph.D.
Practice What You Preach: Coaching Our Coaches on How to Handle Mental Health Emergencies

First Author Name: Yazmin Ortiz, B.A.
Name of University: Woodbury University
University Adviser for this research:
Stephen Nettelhorst, Ph.D.
The Effects of Gender Identity and Masculinity on Fear of Intimacy

First Author Name: Chyna Jade Parker, M.S.
Name of University: Pepperdine University, Graduate School of Education and Psychology
University Adviser for this research:
Shelly Harrell, Ph.D.
Non-binary Experiences in the Context of Gender Dichotomization: A Framework for Theory, Research, and Practice

First Author Name: Katie Patel, M.S.
Name of University: California Lutheran University
University Adviser for this research:
Jamie Bedics, Ph.D.
Therapist Responsiveness in Crisis Planning during Standard Dialectical Behavior Therapy for Borderline Personality Disorder

First Author Name: Andrea Berrios Vasquez, M.A.
Name of University: Alliant International University - California School of Professional Psychology University
University Adviser for this research:
Reneh Karamians, Psy.D.
Destigmatizing Therapy and Maintaining Healthy Connections in the Latinx Community

First Author Name: Anthony Villa, M.A.
Name of University: Alliant International University - California School of Professional Psychology
University Adviser for this research:
Randy Noblitt, Ph.D.
Using Patient Characteristics and Preferences to Match Individuals with Depression to Antidepressant Medications, Cognitive Behavioral Therapy, and/or Mindfulness-Based Cognitive Therapy

First Author Name: Leslie Yick, B.S.
Name of University: Pepperdine University
University Adviser for this research:
Carrie Castañeda-Sound, Ph.D.
#StopAsianHate: Understanding the psychological implications of the dehumanization of Asian people in western media

DO YOU WANT TO SAVE MONEY ON THERAPY?

We negotiate with your insurance plan to reimburse you for your weekly psychotherapy, psychiatry, neuropsych evaluations & assessments.



AA INSURANCE ADVOCACY

Call us today to find out more!
323-510-6405
aainsuranceadvocate@gmail.com

- Confidential, HIPAA Compliant
- We work with employer sponsored/private PPO plans. We do not work with Medicare, Medicaid, government, Union plans.
- Reimbursements range from \$150-\$400 per claim/session. Clients typically save \$5,000 to \$45,000+ annually via reimbursements.
- Applies to current and ongoing treatment (not retroactive to prior years).
- Risk Free! We only charge a fee when we successfully negotiate with your plan to save you money on your therapy bills.
- Additional services include advocacy for general medical and hospital bills.

EMDR INSTITUTE

Founded by Dr. Francine Shapiro



The EMDR Institute offers quality virtual trainings throughout the US to licensed mental health professionals and graduate students in their internship. EMDR therapy is recognized as an evidence-based treatment for trauma-related disorders by WHO, APA, ISTSS, DOD and others.

EMDR Therapy Basic Training

Now more than ever, EMDR therapy is an exceptionally relevant and valuable resource when working with your clients.

Integrate EMDR Therapy For Your Young Clients

W1 - 2023: Jan, Mar, June, Sept, Nov
W2 - 2022: Dec; 2023: Feb, May, July, Oct, Dec

Specialty Application Workshops

Presented by Dr. Roger Solomon

2022: Nov
2023: May, Sept, Nov

www.EMDR.com 831.761.1040



Dr Pamela Freundl Kirst
Clinical Psychologist Psy 6577
Certified Jungian Psychoanalyst

Psychotherapy • Analysis
Adults • Couples

Relationships
Women & Soul
Dreaming & Creativity
Anxiety

310.570.5110

www.DrPamelaKirst.com

DrPamelaKirst@gmail.com
10801 National Blvd, #223
Los Angeles, Ca 90064



LAW & MEDIATION OFFICE OF
DIANE M. GOODMAN, APC

Diane M. Goodman is a lawyer and mediator with a PhD in Depth Psychology.

Her practice emphasizes:

Family Law Mediation including: Dissolution
Child custody
Prenuptial agreements
Adoption disputes
Surrogacy disputes

Family Formation including: Surrogacy agreements
Egg donor agreements
Sperm donor agreements
Guardianship
Adoption
Parentage judgments



17043 Ventura Boulevard
Encino, California 91316
818-386-2889

SUSAN GRAYSEN, Ph.D., FICPPM

PSY11434/GRA032

3 credit \$35 or Free for CPA Div. V Members
Intermediate Level

**Psychopharmacology and Sexuality in Aging
Adults: 16 Clinical Treatment Implications**

Learning Objectives

- 1. Explain impact of sex hormones in marital discord of aging couples, 57+**
- 2. Explain marital infidelity treatment in aging couples, 57+**
- 3. Currently, what is peak age for marital infidelity in M/F, 18-80+**
Independent/Distance Learning

*Diplomate Master Fellow, Advanced Psychopharm.;
CPA/MCEP Provider, CE in Psychopharm. for 20yrs.;
Passed UCLA Proctored National Exam in Advanced
Psychopharm.; 750 Hour Psych. Assistantship
Devoted to the Interface of Medication and Therapy;
Academic, Professional Psychopharm. Publications;
Member, Editorial Review Board, Academic Journal.*

(310) 277-7838

graysenphd@yahoo.com

Karen Shore, PhD, ABPP, CGP

Licensed in CA (PSY18745) and NY (10095)

Psychoanalyst
Certified Therapist and Supervisor in
Emotionally Focused Couples Therapy (EFT)
Board Certified in Group Psychology (ABPP)

Individual Therapy

Psychoanalysis
Psychoanalytic/Psychodynamic Psychotherapy
Emotionally Focused Therapy

Emotionally Focused Couples Therapy

**All Virtual at This Time
Text or call: (310) 490-7601**



**HELPING
PATIENTS
BY WORKING
TOGETHER**

**COMPASSIONATE,
COLLABORATIVE CARE**

Anxiety, Mood Disorders, ADHD, Addiction,
Women's Reproductive Mental Health

CalPsychiatry.com



CTSC law

CALLAHAN THOMPSON SHERMAN & CAUDILL LLP

O. Brandt Caudill, Jr. Esq.
Christopher J. Zopatti, Esq.
Joan E. Trimble, Esq.

Representing Psychologists and other
Mental Health Professionals in civil and
administrative litigation, licensing board
and business matters for over 35 years.

2601 Main Street Suite 800, Irvine, CA 92614
(949) 261-2872

YOUR CALIFORNIA LAWYERS

Irvine | San Diego | San Francisco

WWW.CTSC.LAW.COM PHONE: (949) 261-CTSC

©JUNG INSTITUTE OF LOS ANGELES

10349 W. Pico Blvd.
Los Angeles, CA 90064
310-556-1193
www.junginla.org
office@junginla.org

■ PUBLIC PROGRAMS SERIES starting Fall 2022

Jungian Psychotherapy

A 10-month CE program for clinicians, intended for people interested in the in-depth study of Jung's psychology. Includes case consultation with a certified Jungian analyst. Meets one Saturday a month for 6 hours. Classes can be taken individually.

Jungian Sandplay

Meets online, 9 Saturdays, September 2022-June 2022. Hours can be credited toward CEs, STA, and ISST certification.

Clinical Continuing Education

Find information about all of our programs at www.junginla.org. Continuing education credits available for Psychologists, MFT/LCSW and RNs for many of our programs.

■ ANALYST TRAINING PROGRAM ■ INTERNSHIPS

■ SLIDING-SCALE ADULT AND CHILD CLINICS

■ LIBRARY & BOOKSTORE

Books on Jungian and General Psychology, Mythology, Symbolism, and Artful Gifts. Audio and video streaming.

Office 9-5 Mon.-Fri. ■ Library & Bookstore 11-5 Mon.-Fri.

I can help you improve
your technology skills to
enhance your practice.



Visit
behaviortech.net
to learn more

addiction treatment since 1993

NEW FOUND LIFE



What we offer

12 Step Immersion
Psychiatric Care
Individual & Group Counseling
Therapy
Addiction Education
Dual Diagnosis
Holistic Approach
Case Management

562-434-4060
www.newfoundlife.com
info@newfoundlife.com
Long Beach, CA

Programs

Residential Care ♦ Outpatient
Residential Continuing Care ♦ Family Program



EASY ISSUE LIFE INSURANCE

Three Easy Steps to Get Covered

1

Select a Term Period
Choose from a 10, 20 or 30 year term.

2

Answer Three Health Questions
Only three health questions are required to issue coverage, and you don't have to participate in any invasive medical exams.

3

Get Death Benefit Coverage Immediately
Your death benefit coverage starts when you sign the application

For more information and exclusions please call
RL Wells & Associates, Inc. at (800) 568-4500
or go to our website at
<https://www.rlwellsinc.com/accidentandlife.html>

Rick Wells • Ca. Insurance Lic. No. 0617611
www.rlwellsinc.com



- Tutors – K-12, College, All Subjects, All Levels
- Educational Therapy & ADHD/EF Coaching
- Fully Accredited, K-12 Home Schooling
- Test Prep – All Levels (ISEE, SAT, ACT, AP)
- Educational Consulting

Contact Daniel Franklin, PhD, at 310-571-1176

Dr.Franklin@FranklinEd.com

Franklin Educational Services, Inc.

www.FranklinEd.com



Emily Jenchura, Ph.D. (PSY32113)

CBT to make changes that *cascade* to many aspects of your life
Mindfulness and self-compassion to gain *clarity*
Integrative Psychotherapy for adults In-Person and Online

(424) 235-8082
dr.jenchura@cascadeclarity.com

1849 Sawtelle Blvd. Ste. 610
Los Angeles, CA 90025



Gretchen Kubacky, Psy.D.

HEALTH PSYCHOLOGIST

{ License PSY 21917 }

2001 South Barrington Avenue, Suite 121 Los Angeles, CA 90025
Phone: 310.625.6083 Email: AskDrGretchen@gmail.com
www.DrGretchenKubacky.com

RICHARD S. NEWMAN, PH.D.

CLINICAL PSYCHOLOGY
ADULT, CHILD AND ADOLESCENT PSYCHOTHERAPY

21243 VENTURA BLVD., SUITE 209
WOODLAND HILLS, CA 91364

www.DrRSNewman.com
DrNewman@DrRSNewman.com
Lic. # PSY14600

(818) 518-4962



Evelyn Pechter, PsyD

Clinical Psychologist • PSY21132

28720 Roadside Drive Suite 176
Agoura Hills CA 91301

11850 Wilshire Blvd Suite 200A
Los Angeles CA 90025

310-622-5741
drepechter@gmail.com
www.drevelynpechter.com



HIKING



STUDENT LEADERSHIP



ARTS, CREATIVITY, & CULTURE



NETWORKING



GET INVOLVED!

OUR COMMITTEES, CLUBS, AND SPECIAL INTEREST GROUPS ARE AMAZING OPPORTUNITIES TO CONNECT WITH OTHERS IN THE MENTAL HEALTH FIELD WHILE EXPANDING PERSONAL AND PROFESSIONAL KNOWLEDGE, SKILLS, EXPERIENCE AND EDUCATION!

ETHICS



DIVERSITY



MEMBERSHIP



CONTINUING EDUCATION



COMMUNITY OUTREACH



HOW TO CONTACT US FOR MORE INFORMATION



VISIT LACPA.ORG >> COMMITTEES OR PROGRAMS>>CLUBS/SPECIAL INTEREST GROUPS/ NETWORKING GROUPS AND EMAIL THE CHAIR OR LEADER TO GET INVOLVED TODAY!

UPCOMING LACPA MEETINGS & EVENTS

Visit LACPA's website Calendar for the most up-to-date event listing.
All events listed below will be virtual. Special Interest Group (SIG)
www.lacpa.org



Find LACPA on Social Media!

LACPA's Facebook, Twitter, and Instagram pages are open to anyone who is interested in following to learn about upcoming LACPA events, view photos, receive daily inspiration, interact with fellow members of LACPA as well as the psychology community, and so much more!

One of our many LACPA member benefits is our Facebook group **LACPA Connect**. This is where members can post about groups, events, books, services etc.

For more information and If you would like to post something to LACPA's social media please send an email to lacpasocialmedia@gmail.com.

LACPA @LACPApsych
 @LACPA1945 LACPA

LACPA's 2022 CONTINUING EDUCATION SERIES

For complete information and to register online visit www.lacpa.org
>>Programs>>Continuing Education>>Virtual CE Programs



This course is co-sponsored by the Los Angeles County Psychological Association and The Trust.

Sequence X: Perplexing Problems in Psychological Practice: Decision Science, Ethics & Risk Management

Saturday, January 28, 2023 Via Zoom 9:00 AM - 4:00 PM PT

Presented by Daniel O. Taube, J.D., Ph.D.

**Intermediate Level - 6.0 Live Ethics CE Credits - 15% off your Trust Sponsored
Professional Liability Policy premium (for 2 consecutive years at policy renewal)
Will NOT be recorded**

LACPA is proud to offer this six-credit course qualifying you for a 15% premium discount on your Trust liability insurance for the next two years and provides a simple way to fulfill the legal and ethical requirement needed each relicensure period for both BOP and BBS license holders.

LACPA Member Fee \$150.00

Non-Member Fee \$190

Daniel O. Taube earned his J.D. from Villanova University in 1985 and his Ph.D. in clinical psychology from Hahnemann University in 1987, as a member of the Hahnemann/Villanova Joint Psychology and Law Graduate Program. He is Professor Emeritus at the California School of Professional Psychology, San Francisco at Alliant International University, past Psy.D. Program Director, founder and coordinator of the Forensic Family Child.

His areas of professional focus include ethical and legal issues in professional practice, child protection, and addictions. In addition to his teaching and research interests, he has been in private practice since 1990, has served on the APA Ethics Appeals Panel for over 20 years, and taught graduate and professional level courses on ethical and legal issues in professional practice for 25 years. Dr. Taube regularly consults with a wide range of practitioners and community agencies regarding standards of practice and ethical concerns.

For over two decades, The Trust has worked to educate and support psychologists in improving their risk management skills and strategies by providing live workshops, webinars, risk management consultation and expanding resources. The 10th workshop in our Sequence series will continue to emphasize more applied, integrated and strategic methods to help you protect yourself from adverse disciplinary and legal actions, and stay grounded in ethical principles and practices. The Trust Risk Management Consultants have culled subject matter from some 80,000 consultations provided to date to focus this workshop on problems practitioners often encounter. Topics will include how decision science can inform clinical and ethical decision-making; interjurisdictional practice challenges and navigating the PSYPACT era; complexities in structuring and conducting supervision; managing technology and privacy concerns in practice; and handling subpoenas and depositions. The workshop is designed for an intermediate level.

*** This course will not fulfill requirements of all jurisdictions. It is important that potential participants review their respective state licensing board requirements prior to registering for this workshop.**

This workshop may be counted toward the ethics requirement mandated every two years for license renewal.

Attendees will be able to:

- Describe basic principles of risk management, as applied to several specific clinical situations that frequently arise in professional practice.
- Identify core heuristics and biasing processes that can interfere with appropriate risk management and ethical decision-making.
- List three strategies to ameliorate decision-making challenges.
- Describe preliminary considerations prior to engaging in interjurisdictional practice.
- Evaluate potential issues and preventive responses to supervisory risks.
- Identify three methods for reducing privacy risks when using technology in clinical practice and responding appropriately to breaches if they occur.
- Name three strategies for handling subpoenas and deposition demands.

For more information or to register, click here: <https://lacpa.memberclicks.net/virtual-ce-programs>

The Los Angeles County Psychological Association (LACPA) is approved by the American Psychological Association to sponsor continuing education for psychologists. LACPA maintains responsibility for this program and its content.

This program may be taken to satisfy the California Board of Behavioral Sciences (BBS) continuing education requirements.



MENTAL HEALTH & ADDICTION TREATMENT
FOR TEENS AND THEIR FAMILIES

TEEN IOP/PHP AND DAY SCHOOL

**CALL FOR ASSESSMENT
COVERED BY INSURANCE**

COMMERICAL AIRFLOW, SPACING, PRIVATE BUILDING
AND FOLLOWING CDC GUIDELINES.

800.599.8820
www.insighttreatment.com

PASADENA • VAN NUYS • SOUTH BAY • SANTA CLARITA • MODESTO • EL MONTE • MERCED



Professional Liability Insurance

Peace of Mind Protection for Your Career

We've got you covered

Trust Sponsored Professional Liability Insurance* for psychologists is spot on — with essential coverages that protect you whenever and wherever you provide psychology services, plus a host of features you may not find in other malpractice policies.

We focus on Psychologists

At The Trust, you're not just another insurance policy among so many professional classes. Our malpractice coverage and supporting programs are designed by psychologists and insurance experts to focus on the profession of psychology — especially as it explores and adapts to new and dynamic service delivery models.

Complete Career Financial Protection

- **Telehealth Professional Services** - included at no additional charge
- **Risk Management Consultations** - free, unlimited and confidential
- **Affordable Coverage Options** - choice of claims-made or occurrence
- **Multiple Premium Discounts** - some of which can be combined
- **Free ERP or 'Tail'** - unrestricted, upon retirement, death or disability
- **Prior Acts Included** - when switching from a claims-made policy
- **Free CE & Discounts** - on a variety of live and on-demand courses
- **Free TrustPARMA Membership** - the new home for practice

**The only insurance provider that's truly
for psychologists, by psychologists!**

* Insurance provided by ACE American Insurance Company, Philadelphia, PA and its U.S.-based Chubb underwriting company affiliates. Program administered by Trust Risk Management Services, Inc. The product information above is a summary only. The insurance policy actually issued contains the terms and conditions of the contract. All products may not be available in all states. Chubb is the marketing name used to refer to subsidiaries of Chubb Limited providing insurance and related services. For a list of these subsidiaries, please visit new.chubb.com. Chubb Limited, the parent company of Chubb, is listed on the New York Stock Exchange (NYSE: CB) and is a component of the S&P 500 index.