

36th Annual LACPA Convention

Hilton Los Angeles Culver City
Saturday, October 26th, 2024

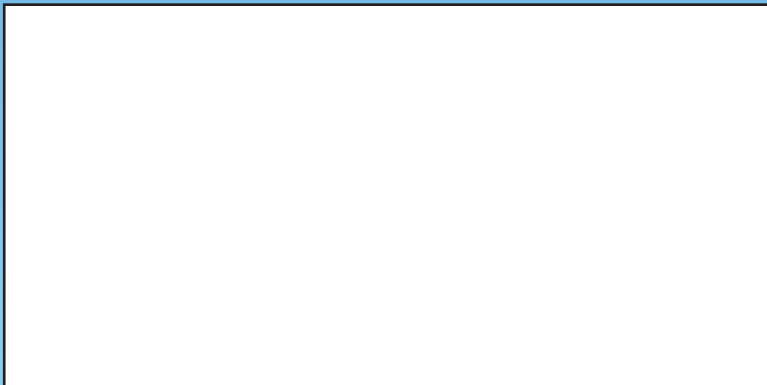
Mental Health as a Universal Human Right

- ✦ Continental Breakfast
- ✦ 8 Breakout Presentations
- ✦ 7 CE/CPDs available
- ✦ Poster Session
- ✦ Special Performance
- ✦ Networking lunch
- ✦ Awards
- ✦ Exhibitor BINGO
- ✦ Social Hour

Featured Speaker:
Derald Wing Sue, Ph.D.

*Racism in Counseling
and Psychotherapy:
Illuminate and Disarm*

2024-2025 Membership Information
and Application Included





EXPERT LEGAL COUNSEL FOR YOUR THERAPY PRACTICE

OUR SERVICES INCLUDE:

- Professional Entity Formation & Structuring
- Employment Law
- Trademark
- Contracts & General Counsel

Glendale, CA | info@fullcirclelbl.com | 818.247.2036



Scan Me!




Bookstore & Library
Mon-Sat., 11 am- 5 pm
10349 W. Pico Blvd,
LA, CA 90064
 junginla.org
 (310)556-1193
 administration@junginla.org

Analytic Training Open House
 We provide intensive analytic training to qualified mental health professionals interested in becoming Jungian analysts. Join us at our open house on October 6th, 2024, from 2pm-4pm. Contact us at administration@junginla.org.

Clinician's Study Program
 We offer a ten-month program for licensed mental health professionals, beginning in September 2024 through June 2025. Email publicprograms@junginla.org

Internship Program
 Applications for a one-year half-time internship to individuals who have completed a masters degree in psychology or social work, or are enrolled in a clinical psychology doctoral program, are now available. Contact our Clinic Directors at clinic@junginla.org.

Jung at Heart Program
 This one-of-a-kind Certificate Program is for members of the public interested in studying Jungian Psychology. Email publicprograms@junginla.org.

Continuing Education Information

The Los Angeles County Psychological Association (LACPA) is approved by the American Psychological Association to sponsor continuing education for psychologists. LACPA maintains responsibility for this program and its content.

These courses may be taken to satisfy the California Board of Behavioral Sciences (BBS) continuing education requirements.

LACPA's 36th Annual Convention will operate under the guidelines of an APA-Approved sponsor of continuing education. All licensees are responsible for maintaining records of completed continuing education courses. LACPA supplies a Document of Attendance that certifies the licensee was present for the entire program and earned the continuing education credits within two weeks of the convention.

It is important to note that APA continuing education rules require that LACPA only give credit to those who attend the entire workshop. An evaluation of the workshops will be emailed to you after the convention and must be completed. Those who arrive fifteen minutes or more after the scheduled start time or leave before the workshop is completed will NOT receive CE credit. Partial credit may not be given.

LACPA is pleased to announce our 2024 Convention Sponsors!

The Trust trustinsurance.com

Headway headway.co

Full Circle Business Law, PC fullcirclebl.com

PCI Centers pcicenters.com

ROWI Teen & Parent Wellness rowiteen.com

LACPA Foundation lacpa-foundation.squarespace.com

Karen Shore, Ph.D., ABPP, CGP (310) 490-7601

Invision invision.am

DBT Associates of Southern California - Cheryl A. Kempinsky, Ph.D., dbtassociatesofsocal.com

Caldwell Reports caldwellreports.com

Mental Fitness Clinic mentalfitnessclinic.com



Soni Kim Monroe, Psy.D.

Dear Colleagues,

After record-breaking attendance for last year's in-person Convention, we are expecting another event where we can learn, network, and strengthen connections. Realizing we needed a much larger venue and better parking services, we are returning to the newly upgraded Hilton Los Angeles Culver City (formerly DoubleTree). This year's Convention date is Saturday, October 26, 2024. Early bird registration is currently open with discounted rates!

To align with Dr. Peyman Raoofi's presidential theme of *Mental Health as a Universal Human Right*, our keynote speaker, Derald Wing Sue, Ph.D., will speak on *Racism in Counseling and Psychotherapy: Illuminate and Disarm*. Most of you are likely already familiar with Dr. Sue's groundbreaking work through his presentations and the many textbooks he authored, and we are honored to have him join us for the convention. We will continue our collaboration with Mirrors of the Mind, and you will see artwork produced by our colleagues throughout the convention space. If you didn't see any of the artwork at last year's convention, please look for them this year. The day also includes a special performance, opportunities for networking, posters, awards, a continental breakfast, a plated luncheon, and post-convention social hour.



Peyman Raoofi, Psy.D.

We have eight exciting workshops covering a wide range of topics, some of which can be used for the Law and Ethics and Diversity and Social Justice requirements for CPDs. In the morning, we have "Let's Face

It Together: Professional Wills Matter" by Robyn Miller, Ph.D., "The Brave New World of Psychedelics in Mental Health" by David Laramie, Ph.D. and Eva Altobelli, M.D., "Cultivating Resilience: Inclusive Therapy for Mixed Race Clients" by Jennifer Noble, Ph.D., and "Help Couples With Sex, Even if You're Not a Sex Therapist" by Silvina Irwin, Ph.D. and Lisa Blum, Psy.D. In the afternoon, we have "It Will Never Happen to Me and Other Ethical Delusions" by Barbara Cadow, Ph.D., Cheryl A. Kempinsky, Ph.D. and Margaret (Molly) Hunt, Ph.D., "Functional Neurological Disorder: Considerations for the Mental Health Professional" by Lauren Keats, Psy.D. and Mike Pugh, Ph.D., "Risk & Resilience in Descendants of the Holocaust" by Melissa Wasserman, Psy.D. and Sarah Peterson, B.S., and "Storytelling for Human Rights: Activism Overcomes Tokenism" by Michi Fu, Ph.D., Aron J. Sanabria, M.A. and Raphael Solano.

As we are all too acutely aware, 2024 has been a challenging year thus far in terms of world events that affected (and continue to affect, as of today) how we relate to each other, here at home. The world needs the peace and understanding that the field of psychology is uniquely qualified to bring, and we see how important it is to make mental health services available to all, as a universal human right. We hope that gathering in person as colleagues will bring us closer together to mend wounds and soothe



Los Angeles County Psychological Association
36th Annual Convention

Mental Health as a Universal Human Right

SATURDAY, OCTOBER 26, 2024 – At Hilton Los Angeles Culver City

Featured Afternoon Speaker: Derald Wing Sue, Ph.D.

Racism in Counseling and Psychotherapy: Illuminate and Disarm

Convention sessions will NOT be recorded.

Register online at lacpa.org

Early Bird Rates

Standard Rates

Purchase by 8/26/24

Purchase by 10/18/24

LACPA Member	\$195.50
LACPA Post-Doc/Pre-Licensed or Student Member	\$93.50
<u>NO CE Credits</u>	
Non-Member	\$233.75
Student Non-Member (Pre-Doctoral) must submit proof of student status -	\$119
<u>NO CE Credits</u>	

LACPA Member	\$230
LACPA Post-Doc/Pre-Licensed or Student Member	\$110
<u>NO CE Credits</u>	
Non-Member	\$275
Student Non-Member (Pre-Doctoral) must submit proof of student status -	\$140
<u>NO CE Credits</u>	

**Session selections will need to be made at the time of registration.
Changes can be made up to 10/13.**

CANCELLATION POLICY:

**TO RECEIVE A REFUND, A REQUEST MUST BE RECEIVED IN WRITING NO LATER THAN OCTOBER 13, 2024.
A \$35 PROCESSING FEE IS DEDUCTED FROM ALL REFUNDS.**

The Los Angeles County Psychological Association (LACPA) is approved by the American Psychological Association to sponsor continuing education for psychologists. LACPA maintains responsibility for this program and its content.

These sessions may be taken to satisfy the California Board of Behavioral Sciences (BBS) continuing education requirements.

It is important to note that APA continuing education rules require that LACPA only give credit to those who attend the entire session. Those who arrive more than 15 minutes after the scheduled start time or leave before the session is complete will not receive CE credit. Partial credit may not be given.

FEATURED SPEAKER



Derald Wing Sue is a Professor of Psychology and Education in the Department of Counseling and Clinical Psychology at Teachers College, Columbia University. He was the co-founder of the *National Multicultural Conference and Summit*, co-founder and first President of the *Asian American Psychological Association*, past presidents of the *Society for the Psychological Study of Culture, Ethnicity and Race*, and the *Society of Counseling Psychology*. Derald has served as Editor or Associate Editor of many professional journals, including the *American Psychologist*, *Asian American Journal of Psychology*, and the *Personnel and Guidance Journal*.

Derald is a pioneer in the field of multicultural psychology, microaggression theory, racial dialogues, multicultural counseling and therapy, and the psychology of racism/anti-racism. He is the author of 23 books and nearly 200 scholarly publications. His services have been widely sought by many groups and organizations. He has also done extensive cultural diversity training for many Fortune 500 companies, institutions of higher education, governmental agencies, public schools, and mental health organizations. His current research and work focuses on “microintervention strategies to disarm and dismantle racism and bias. His most recent book *Microintervention Strategies: How you can disarm and dismantle individual and systemic racism and bias* (2021) outlines specific individual actions that can be taken by targets, allies and bystanders to counteract bias and discrimination.

As evidence of Dr. Sue’s stature in the field, two studies of multicultural publications and scholars concluded, “*Impressively, Derald Wing Sue is without doubt the most influential multicultural scholar in the United States today.*”

Convention Information

Confirmation: Participants will receive confirmation of their enrollment. Please arrive at least thirty minutes early to complete check-in. Sessions will start promptly at the time indicated. Late arrivals (five minutes or more after start) to sessions will not be eligible to receive continuing education credit.

Cancellation Policy: To receive a refund, a request must be received in writing no later than October 13, 2024. A \$35 processing fee is deducted from all refunds. Refunds will be processed within 30 days.

Americans with Disabilities Act Compliance: The Los Angeles County Psychological Association is available to make arrangements for individuals with particular needs. Anyone who requires special accommodation for a disability is requested to notify the LACPA office at lacpa1@gmail.com two weeks prior to the event.

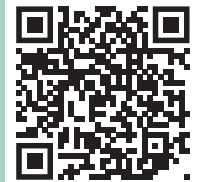
Documentation of Attendance: *Individuals who complete a program in its entirety and turn in the required CE paperwork at the end of each session, will receive a Document of Attendance via email within two weeks of the convention.*

Location, date, and presenters are subject to change.

Register Now!

<https://lacpa.memberclicks.net/annual-convention>

Convention sessions will NOT be recorded.



Los Angeles County Psychological Association
6345 Balboa Boulevard, Suite 126
Encino, CA 91316
Phone 818-905-0410
Lacpa1@gmail.com www.lacpa.org

LACPA’s 2024 Convention Committee

Soni Kim Monroe, Psy.D., Chair
Peyman Raoofi, Psy.D., 2024 President

Rebekah Finch, M.A., Director of Operations
A driene Ghiasian, B.A., Administrative Coordinator

Miriam Hamideh, Ph.D.	David Laramie, Ph.D.
James Kalivas, Psy.D.	Yingying Liu, M.A.
Rachel Kavanaugh, Psy.D.	Jaz Robbins, Psy.D., BCHN
Urszula Klich, Ph.D.	Richard Sherman, Ph.D.

CONVENTION EVENTS

Registration/Breakfast; Session I, Welcome and Session II; Networking Lunch; Special Performance, Exhibitor Bingo; Poster Presentations, Awards, Session III; Post Convention Social Hour

The Los Angeles County Psychological Association is grateful to the LACPA Foundation for its financial contribution to the Poster Awards.
Cover Design by David Ilan of Galileo Graphics

Convention Schedule

Saturday, October 26, 2024

HILTON LOS ANGELES CULVER CITY

6161 West Centinela Avenue, Culver City, CA 90230

Times and events are subject to change

Breakfast/Registration
7:45 a.m.

Session I

2.0 CE Credits all courses

8:30 - 10:30 a.m. PT

*More information on each program can be found on
www.lacpa.org*

Let's Face It Together: Professional Wills Matter

Course Level: Intermediate

This workshop may be counted toward the Ethics requirement mandated every two years for license renewal.

Participants assess ethics and impact of a Professional Will to protect patients by planning for an incapacitation or death. Training is provided on the clinical, business, and emotional considerations for formulating and administering a directive. First-hand experiences as Practice Executor for a relational psychotherapy practice inform the recommended guidelines.



Robyn Miller, Ph.D., is a clinical psychologist practicing in Maryland since 2002. Dr. Miller trained at the Massachusetts Mental Health Center/Harvard Medical School and at Harvard University Counseling Center. She earned a Ph.D.

from University of Rochester, and a B.A. from Tufts University. Psychotherapy interests include menopause transitions, eating and mood disorders, and trauma. Dr. Miller has written about professional wills and the role of practice executor.

The Brave New World of Psychedelics in Mental Health

Course Level: Intermediate

Psychedelics are complex and powerful tools for mental health treatment that offer great promise and demand great caution. Regulation of them and best practices are rapidly evolving. This workshop will cover some fundamentals of their application and principles for harm reduction and maximizing utility.



Eva Altobelli, M.D., is the founder of Home-LA, a wellness center integrating psychiatry, psychotherapy and psychedelic healing. Dr Altobelli completed a psychiatric residency and fellowship in addiction and is a Diplomate of the American Board of Psychiatry and Neurology. With post graduate training ranging from IFS and psychotherapy, to ketamine and psychedelic therapies, her practice integrates mind, body and spirit into the healing process.



David Laramie, Ph.D., is a health psychologist who strongly believes in systemic and integrative approaches to healing and wellness. He draws on psychoanalytic, emotion focused, psychedelic, energy, and somatic approaches in his psychotherapy work. He has completed training with the Psychedelic Research and Training Institute, Naropa University, the Multidisciplinary Association of Psychedelic Studies, and the Psychedelic Somatic Institute.

Help couples with sex, even if you're not a sex therapist

Course Level: Intermediate

Couples seeking relationship therapy often struggle with their sexual relationship. However, long-standing divides between the fields of couples and sex therapy leave couples therapists feeling ill-prepared to address sex in therapy. This workshop offers an attachment-focused framework to assess and address sexual difficulties, even if you're not a sex therapist.



Silvina Irwin, Ph.D., is a clinical psychologist in Pasadena, California. She specializes in addressing the impact of trauma on intimate relationships, and in helping couples with their sexual connection. Trained and mentored by Dr. Sue Johnson, Silvina is a certified trainer in Emotionally Focused Therapy. She is bilingual in Spanish, and trains therapists around the world in EFT. Silvina is the co-founder of the EFT Resource Center, and the EFT Center of Los Angeles.



Lisa Blum, Psy.D., (PSY#19790) is a licensed clinical psychologist and an ICEEFT-Certified Supervisor in Emotionally Focused Couples Therapy (EFT). Dr. Blum is in private practice in Pasadena and her work includes individual, couples, family therapy, and supervision, training, and public speaking on family, marital, parenting and sexuality issues. Dr. Blum works with both LGBTQ+ and straight couples and co-facilitates workshops for couples who want to enrich their sexual connection.

Cultivating Resilience: Inclusive Therapy for Mixed Race Clients

Course Level: Intermediate

This workshop may be counted toward the Cultural Diversity and Social Justice requirement mandated every two years for license renewal.

This presentation explores the experiences of mixed race individuals, their identity development, and the mental health impact of marginalization. Recognize microaggressions' influence on presenting problems and learn practical strategies to address them, fostering a more inclusive practice. Gain important insights bridging research and clinical application to better serve multiracial clients.



Jennifer Noble, Ph.D., (she/her) specializes in adolescents, mixed race and BIPOC people. Her clinical work uses multicultural community psychology and liberation psychology to address sociopolitical and sociocultural factors impacting mental health. Dr. Noble conducts seminars for clinicians seeking to increase cultural humility with mixed race populations and works with parents of mixed race children teaching how to build a secure identity.

2024 CONTINUING EDUCATION SERIES

Post-Covid Anxiety: Helping Clients Return to Life

Presented by Joanna Haase, Ph.D., MFT
September 28, 2024 • 9 am - 12 pm via Zoom Webinar
Intermediate Level

<https://lacpa.memberclicks.net/upcoming-ce-cpd-programs>

Continued from page 3

troubled hearts; as we know, connections heal. Please consider bringing a colleague who has never attended a LACPA Convention before, to introduce them to the unique collaborative community we all enjoy. Psychologists can earn up to 7 CPD/CEs from the day.

We look forward to seeing you all there!

Soni Kim Monroe, Psy.D.
Chair

Peyman Raoofi, Psy.D.
2024 President

Session II
Welcome & Featured Speaker
in Ballroom
2.0 CE Credits
10:45 a.m. - 12:45 p.m. PT

Break
Poster Presentations,
Exhibitor BINGO,
Beverages on terrace
12:45 – 1:15 p.m. PT

**Racism in Counseling and Psychotherapy:
 Illuminate and Disarm**

Intermediate Level Course

This workshop may be counted toward the Cultural Diversity and Social Justice requirement mandated every two years for license renewal.



Derald Wing Sue, Ph.D., is Professor of Counseling and Clinical Psychology at Teachers College, Columbia University. He is a pioneer in the field of multicultural psychology, microaggression theory, racial dialogues, multicultural counseling and therapy, and the psychology of racism/antiracism. Author of 23 books and nearly 200 scholarly publications, he served as past presidents of the Asian American Psychological Association, The Society of Counseling Psychology, and The Society for the Study of Culture, Race and Ethnicity. Two studies of multicultural publications and scholars concluded, "Impressively, Derald Wing Sue is without doubt the most influential multicultural scholar in the United States today."

The biased history of psychology is a major tool by which clinicians located the source of problems within POC, their family values/structures, and their communities. The concept of professionalism in counseling and psychotherapy is a root cause of racial bias in mental health practice. Rather than heal or liberate, psychologists have oppressed and silenced Clients of Color in their practice. Radical solutions are offered for dismantling racism at the professional and individual levels of mental health practice, thereby, promoting healing and well-being.

Course Goals and Objectives:

- Attendees will be able to describe how professionalism in counseling and psychotherapy mask racial and cultural biases in mental health practice.
- Attendees will be able to define cultural racism in counseling and psychotherapy.
- Attendees will be able to apply at least two culturally-relevant strategies or techniques to disarm or dismantle racism in mental health practice.

**Lunch, Performance, Dessert
 and Awards in Ballroom**

1:15-2:20 p.m. PT

**LACPA Announces our
 2024 Award Honorees**



**Distinguished Service
 to LACPA by a
 LACPA Member**
Kenneth Skale, Psy.D.



**Distinguished Service
 to LACPA by a
 Graduate Student**
Yingying Liu, M.A.



**Distinguished Service to
 the Community, Diversity,
 or Social Justice**
Wayne Kao, Psy.D.



**Distinguished
 Legislative Award**
Mayor Karen Bass

LACPA Announces our 2024 Convention Poster Presenters

First Author Name and Degree: Radwa Ahmed, M.A.
Name of University: Alliant International University
University Advisor for this research: Lisa Liu, Ph.D.
Title of Poster: *Identity Development and Depressive Symptoms in Multiethnic College Students*

First Author Name and Degree: Sarah Alkrisat, M.A.
Name of University: Alliant International University
University Advisor for this research: Dr. Lisa Liu, Ph.D.
Title of Poster: *Examining Perceived Knowledge and Stigmatization of Attention-Deficit/Hyperactivity (ADHD) Disorder Among Arab Parents*

First Author Name and Degree: Taylor Bak, M.S.
Name of University: Alliant International University
University Advisor for this research: Randy Noblitt, Ph.D.
Title of Poster: *Cognitive Functioning and Cognitive Remediation Therapy for Bipolar Disorder*

First Author Name and Degree: Sandra Chen, M.A.
Name of University: Alliant International University
University Advisor for this research: Lisa Liu, Ph.D.
Title of Poster: *Acculturation and Exposure to Discrimination on Social Media among Asian Americans*

First Author Name and Degree: Mackenzie Conner, M.A.
Name of University: Biola University
University Advisor for this research: Kerry Horrell, Ph.D.
Title of Poster: *The Use of Therapeutic Assessment in the Diagnosis and Treatment of Complex Trauma and Oppositionality: A Case Study*

First Author Name and Degree: Tracy Dubin, M.A.
Name of University: The Medical University of South Carolina
University Advisor for this research: Xingbao Li, MD, MSCR
Title of Poster: *Medial orbitofrontal cortex repetitive transcranial magnetic stimulation may best treat addiction & preserve working memory for the nicotine-dependent*

First Author Name and Degree: Sara Fardeheb, B.A.
Name of University: California State University, Fullerton
University Advisor for this research: Sawssan R. Ahmed, Ph.D.
Title of Poster: *Racist Life Experiences Mediating Social Support's Impact on Acculturative Stress*

First Author Name and Degree: Shannon Luu, M.A.
Name of University: Alliant International University
University Advisor for this research: Rebecca Bokoch, Psy.D., LMFT
Title of Poster: *Interplay of Social Support and Mental Health Among Asian American Young Adults*

First Author Name and Degree: Matthew Moore, B.S.
Name of University: Pepperdine University
University Advisor for this research: Melissa Wasserman, Psy.D.
Title of Poster: *Brothers At War: Evaluating Program Satisfaction of a Film Assisted Family Informed Resiliency Workshop*

First Author Name and Degree: Sarah Peterson, B.S.
Name of University: Pepperdine University
University Advisor for this research: Melissa Wasserman, Psy.D.
Title of Poster: *Transgenerational Trauma and Communication: Risk and Resilience in Descendants of Holocaust Survivors*

First Author Name and Degree: Aron J. Sanabria, M.A.
Name of University: Alliant International University
University Advisor for this research: Michi Fu, Ph.D.
Title of Poster: *The Token Puzzle: Asian American Realities with Race Matching in Education*

First Author Name and Degree: George Santos-Garcia, B.A.
Name of University: Mount Saint Mary's University
University Advisor for this research: Richard C. Zamora, Ph.D.
Title of Poster: *An Autoethnographic Self-Validation of the Interpersonal Theory of Suicide*

First Author Name and Degree: Jolie Slater, M.A.
Name of University: Fuller Theological Seminary
University Advisor for this research: Alexis Abernethy, Ph.D.
Title of Poster: *A Holistic Model for Food Insecurity Among College Students*

First Author Name and Degree: Topaz Tabibi, B.A.
Name of University: Alliant International University
University Advisor for this research: Shawndecia Drinkard, Ph.D.
Title of Poster: *Mindfulness Interventions for Refugee Children in School*

Session III

2.0 CE Credits All Courses

2:30 - 4:30 p.m. PT

More information on each program can be found on www.lacpa.org

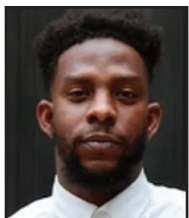
Functional Neurological Disorder: Considerations for the Mental Health Professional

Course Level: Intermediate

Functional neurological disorder (FND) is a misunderstood and stigmatized neuropsychiatric disorder which leads to high levels of functional impairment, burden, and healthcare costs. Individuals with FND often experience iatrogenic harm, misdiagnoses, and incorrect treatment, further exacerbating symptomatology. A well-informed therapist is uniquely equipped to address these barriers and facilitate recovery.



Lauren Keats, Psy.D., is a neuropsychologist and psychology director at re+active therapy and wellness. She completed her clinical internship in integrated behavioral medicine and post-doctoral training in geropsychology. She currently specializes in neuropsychological assessment and treatment of adults with a broad range of conditions, including functional neurological disorder, persisting problems after concussion, acquired brain injury, Parkinson's disease, and neurodegenerative disease.



Mike Pugh, Ph.D., is a rehabilitation psychologist in a multidisciplinary rehabilitation clinic. He received his Counseling Psychology PhD from Virginia Commonwealth University and completed additional training in rehabilitation and health psychology. He conducts evidence-based treatment with populations who have chronic health conditions. Mike conducts and publishes research pertaining to health disparities, neurorehabilitation outcomes, and social determinants of health.

It Will Never Happen to Me and Other Ethical Delusions

Course Level: Advanced

This workshop may be counted toward the Ethics requirement mandated every two years for license renewal.

We will address common ethical questions from LACPA members who consulted the Ethics and Education Committee. A sample of Board of Psychology disciplinary actions, citations, and their resolutions will also be reviewed. We will outline the steps for psychologists to follow to ensure that they are practicing within ethical guidelines.



Barbara Cadow, Ph.D., has been in private practice for over 35 years. She is on the clinical faculty at the Department of Psychology at the University of Southern California. She served as Vice President of the California Board of Psychology and is a member of the LACPA Ethics, Information and Education Committee.



Cheryl A. Kempinsky, Ph.D., received her degree from the California School of Professional Psychology in 1990. Her practice, DBT Associates of Southern California, in Westwood, specializes in the treatment of BPD adults, adolescents, children and families using Dialectical Behavioral Therapy. She has served on the Board of Directors of the National Education Alliance for Borderline Personality Disorder. Currently, she is a member of the LACPA's Ethics Information and Education Committee.



Margaret (Molly) Hunt, Ph.D., co-directs Santa Monica Psychology Group, where she provides cognitive-behavioral and mindfulness-based therapies to adults. Dr. Hunt additionally co-chairs the LACPA Ethics Committee, is a member of the California Psychological Association Ethics Committee and serves as Clinical Faculty at UCLA. She received her Clinical Psychology doctorate from UCLA. Her work has been published in *Brain, Behavior and Immunity*, *Frontiers in Psychiatry*, and *The British Journal of Psychiatry*, among others.

Storytelling for Human Rights: Activism Overcomes Tokenism

Course Level: Intermediate

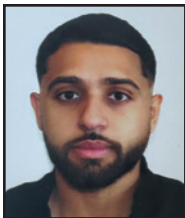
This workshop may be counted toward the Cultural Diversity and Social Justice requirement mandated every two years for license renewal.

Tokenism creates an illusion of equality for minorities. The term Activism merges art and activism, advocating for societal change, engaging audiences to raise awareness and inspire action on critical issues. By applying Bronfenbrenner's ecological model and Activism, mental health practitioners may address tokenism and advocate for universal human rights.



Michi Fu, Ph.D., is a licensed Psychologist and Professor at Alliant International University and Visiting Professor of National Taiwan University's College of Public Health. They consult at Garfield Health Center and have

a telehealth practice, utilizing bilingual skills. Dr. Fu specializes on the topics of cross-cultural psychology, Asian American mental health, sexuality, gender, leadership, mentoring and complex trauma.



Aron Sanabria, M.A., is a current Ph.D. Student at Alliant International University. He obtained his Master of Arts in Counseling for Mental Health and Wellness from New York University. He received certifications in Mental

Health First Aid and Sexual Harassment Prevention. He has interned at Mind-Body and Inner Self Counseling, as a therapist in private practice.



Raphael Solano is an undergraduate student at California Polytechnic University, Pomona's Psychology program. He is interested in working with culturally diverse populations and delving deeper into the intersection of cultural attitudes,

art, and morality development, including effects on a person's sense of self and their decision making. He is currently involved with the PsiChi chapter on his campus.

Risk & Resilience in Descendants of the Holocaust

Course Level: Intermediate

This workshop may be counted toward the Cultural Diversity and Social Justice requirement mandated every two years for license renewal.

The relationship between psychological symptoms and family communication in second- and third-generation Holocaust survivors is explored. Specific vulnerability and resilience factors related to the intergenerational effects of Holocaust exposure are highlighted. Clinical implications, including culturally sensitive assessment, conceptualization, and treatment of intergenerational trauma in descendants of Holocaust survivors, are discussed.



Melissa Wasserman, Psy.D., is an Assistant Professor at Pepperdine University's Graduate School of Education and Psychology. Her areas of scholarship include war-related trauma, cultural trauma, post-traumatic growth, and resilience.

She co-directs a student training mental health clinic at a faith-based mission on Skid Row located in downtown Los Angeles and maintains a small private practice in the Los Angeles area.



Sarah Peterson, B.S., is a graduate student in Pepperdine University's Master of Arts in Clinical Psychology program. An MFT/PCC trainee at Maple Counseling Center, she holds a foundation in counseling and family dynamics from anti-

racist, intersectional feminist, and affirmative lenses. Within Pepperdine's Trauma Risk & Resilience Research Lab, Sarah's research focuses on transgenerational trauma transmission and evidence-based interventions for trauma-exposed populations.

**No-Host Social Hour
in the Lobby Lounge
4:45 - 5:45 p.m. PT**



- Tutors – K-12, College, All Subjects, All Levels
- Educational Therapy & ADHD/EF Coaching
- Fully Accredited, K-12 Home Schooling
- Test Prep – All Levels (ISEE, SAT, ACT, AP)
- Educational Consulting

Contact Daniel Franklin, PhD, at 310-571-1176

Dr.Franklin@FranklinEd.com

Franklin Educational Services, Inc.

www.FranklinEd.com

SUSAN GRAYSEN, Ph.D., FICPPM

PSY11434/GRA032

3 credit \$35 or Free for CPA Div. V Members
Intermediate Level

Psychopharmacology and Sexuality in Aging Adults: 16 Clinical Treatment Implications

Learning Objectives

1. Explain impact of sex hormones in marital discord of aging couples, 57+
 2. Explain marital infidelity treatment in aging couples, 57+
 3. Currently, what is peak age for marital infidelity in M/F, 18-80+
- Independent/Distance Learning

Diplomate Master Fellow, Advanced Psychopharm.; CPA/MCEP Provider, CE in Psychopharm. for 20yrs.; Passed UCLA Proctored National Exam in Advanced Psychopharm.; 750 Hour Psych. Assistantship Devoted to the Interface of Medication and Therapy; Academic, Professional Psychopharm. Publications; Member, Editorial Review Board, Academic Journal.

(310) 277-7838

graysenphd@yahoo.com

Karen Shore, PhD, ABPP, CGP

Licensed in CA (PSY18745) and NY (010095)

Psychoanalyst
Certified Therapist and Supervisor in
Emotionally Focused Couples Therapy (EFT)
Board Certified in Group Psychology (ABPP)

Individual Therapy

Psychoanalysis
Psychoanalytic/Psychodynamic Psychotherapy
Emotionally Focused Therapy

Emotionally Focused Couples Therapy

All Virtual at This Time

**Text, call, or text through WhatsApp to:
(310) 490-7601**

**For more privacy, use WhatsApp or email
karenshorephd@ksphd.hush.com**



Trauma-informed psychotherapy: individual, couple, and group.

Specialized treatment for hoarding: Psychotherapy, support group, workshop.

Therapist training and research on hoarding and Compassion-Focused Therapy.





Intensive Outpatient Treatment

For mental health & addiction

www.pcicenters.com

- Anxiety
- Depression
- Alcohol Use
- Opioid Use
- Dual Diagnosis
- Trauma and PTSD
- Personality Disorders
- Stress and Burn Out
- Relationship Issues and more



Find us on all social media platforms @pcicenters

Individual, Group, & Family Therapy

Medication Management

Comprehensive Medical Evaluations

Vocational Career Counseling

(747) 222-7464

31194 La Baya Drive Suite 201 Westlake Village, CA 91362

In-network with Anthem & Health Net Our patient advocacy team will work with your out-of-network benefits

Wilshire Valley

Therapy Center

Healing begins today.

wilshirecenter.net

(818) 906-0406

A diverse multilingual psychotherapy group. In L.A. since 1993. Serving individuals, families, children and the LGBTQ+ community.

COMPREHENSIVE MENTAL HEALTH CARE FOR KIDS (8-12) & TEENS (12-17)



Primary mental health PHP & IOP programs
Clinician-owned, family operated
Small group sizes
ASD-inclusive



ROWI provides the environment and tools to create positive growth and healthy relationships.

(800) 721-ROWI
info@rowiteen.com
ROWITEEN.COM

We accept insurance from most providers.

Locations in:
Thousand Oaks Torrance
Calabasas Long Beach
Encino Rancho Cucamonga
Pasadena Corona
Burbank Temecula
Covina Tustin
Valencia Lake Forest
Vista Brea



GRAPHIC DESIGN for PSYCHOLOGISTS

PRINT and WEB graphics for psychologists for over 20 years

Newsletters, Brochures, Business Cards, Ad Design, Book Layout, Photography, Websites

818-389-5283

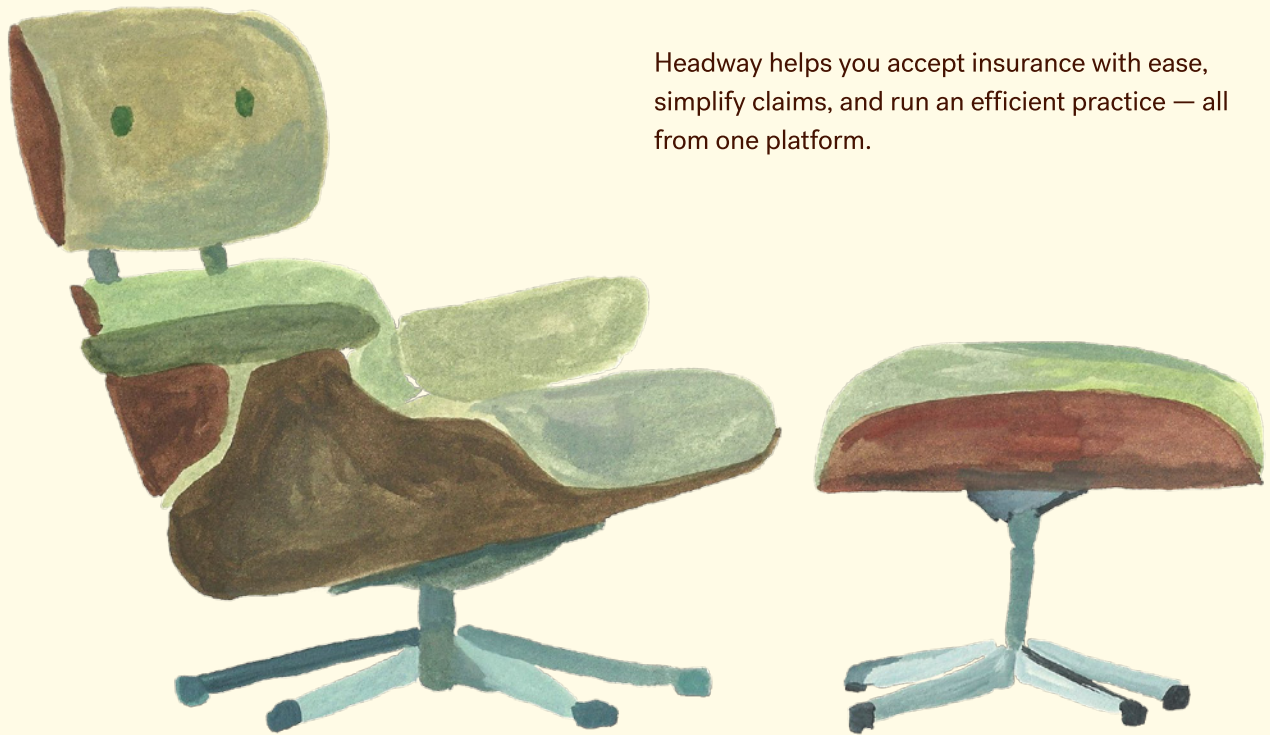
www.galileo1.com david@galileo1.com

Practice



in-network

Headway helps you accept insurance with ease, simplify claims, and run an efficient practice — all from one platform.

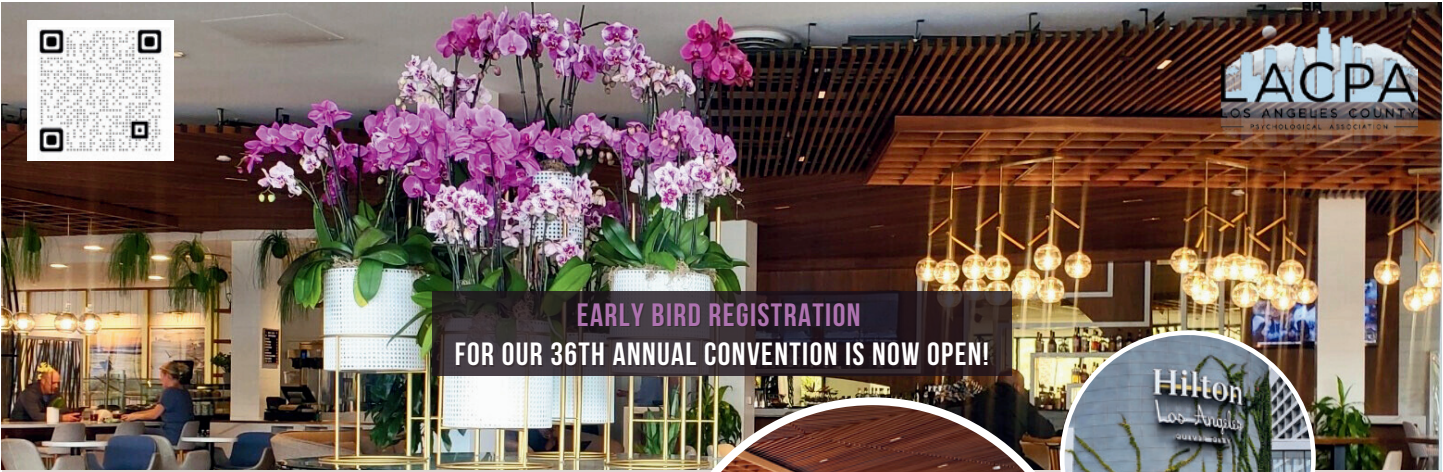
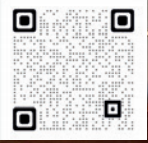


with confidence

- Sign up for free with no monthly fees
- Get credentialed in multiple states in as little as 30 days
- Earn more with enhanced rates from California's largest plans, paid bi-weekly
- Gain access to 150+ hours of free continuing education

Join 30,000+ mental health providers on Headway with access to treat 23.6M covered lives in California. headway.co





**EARLY BIRD REGISTRATION
FOR OUR 36TH ANNUAL CONVENTION IS NOW OPEN!**

JOIN US 10/26/24

**AT THE BEAUTIFULLY REMODELED AND UPGRADED
HILTON LA CULVER CITY
FOR A DAY OF NETWORKING,
PROFESSIONAL DEVELOPMENT, AND MORE.**

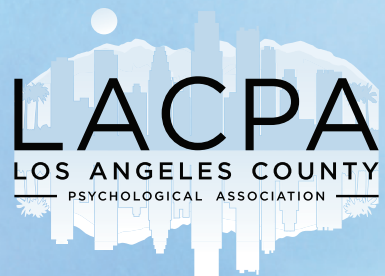
JUNE 3RD- AUGUST 26TH, 2024

**REGISTER EARLY TO SAVE
AND ENSURE YOUR SPACE FOR THIS EXCELLENT EVENT.**



WWW.LACPA.ORG

Call for 2025 Lunch & Learn CE presentations! Deadline August 19th 2024



All LACPA members are welcome to submit a 1.5 hour presentation to be presented as a FREE member benefit!

2024/2025 LACPA Membership Information & Application

"The Voice of Psychology and psychologists for all of Los Angeles County."

WHAT IS LACPA?

LACPA is proud to be one of the largest psychological associations in the country, with more than 1000 members. Founded in 1945, LACPA is a chapter of the California Psychological Association (CPA) and has strong ties with the American Psychological Association (APA). LACPA was recognized as the 2015 CPA Outstanding Chapter of the Year. Our fiscal stability allows us to offer a wide range of benefits, services, and activities to our members.

LACPA provides members with opportunities to develop professionally, as well as opportunities to relax and socialize. Many people join because of the invaluable sense of community, belonging, and collegial connection among members. As LACPA continues to grow, it brings together individuals who work in a variety of disciplines within psychology to exchange ideas.

LACPA has a vibrant spirit of camaraderie, inclusivity, diversity, dedication, and compassion. We invite all members to explore the opportunities LACPA offers, to take advantage of the many benefits available, and to be part of a growing community.

Membership with LACPA can also meet most (if not all) of the new Board of Psychology Continuing Professional Development (CPD) requirements through the many benefits listed below!

THE LACPA BOARD OF DIRECTORS

LACPA is governed by a rotating Board of Directors charged with overseeing the association's financial health, coordinating the myriad events we hold, and representing our association to the public. We are always looking for driven, inspired, collaborative professionals to join us in positions of leadership on one of our many committees or the Board itself.

LACPA FOUNDATION

The LACPA Foundation raises funds to benefit marginalized populations, supports our annual Convention, and provides student scholarships.

MEMBER BENEFITS

Build Your Practice:

Networking

LACPA's networking events are highly valued by members and provide virtual and in-person opportunities to build relationships with colleagues.

Listserv

LACPA's listserv is an invaluable tool for building your practice, sharing professional resources, and staying engaged.

Online Therapist Search

LACPA's Find-A-Therapist online directory helps the public community find and connect with you about your mental health services.

Connect with Others:

Committees, Special Interest Groups & Clubs

Our members can join many virtual, hybrid and in-person committees, clubs, and special interest groups (SIGs) to connect with other like-minded professionals, develop and share skills and interests and be of service to the community.

Get involved in LACPA **Committees**, (Arts/Creativity/Culture, Continuing Education, Convention, Diversity, Disaster Response, Early Career Psychologists, Local Advocacy Network, Membership, Networking, Publications, and Technology), as well as current **Clubs** (Book, Film & Hiking) and **SIGs** (Assessment, Child & Adolescent, Conscious Aging, Divorce, Separation & Reconfigured Families, Ecopsychology, LGBTQ+, Severe Mental Illness, Sexuality & Sex Therapy, Sports & Performance Psychology & Trauma & Trauma Therapy).



More Benefits:

Magazine: LACPA membership includes a free subscription to *The Los Angeles Psychologist*, our award-winning quarterly magazine. Stay informed about upcoming events, take advantage of free group therapy advertising, advertise your business or other events, remain current on innovations in theory and practice and submit your work for publication.

Advocacy: LACPA fosters grassroots efforts to address the state and national governments' impact on our profession, in coordination with CPA. Our Local Advocacy Network organizes efforts to contact legislators, educate members about legislation related to psychology, and lobby for legislation important to our profession.

Ethics Consultation: LACPA's Ethics Information & Education Committee provides free consultation on ethical matters by our specially trained members.

Convention: LACPA's 36th annual Convention will be held at the Hilton LA Culver City on October 26th, 2024, with excellent programs available, including Featured speaker, Dr. Derald Wing Sue, and up to 7 CE/CPD Credits available! Includes breakfast, networking lunch and post-convention social hour.

Continuing Education: LACPA is approved by the American Psychological Association (APA) to offer CE/CPD credits for Psychologists, LCSWs, and LMFTs. Our programming is renowned for its high quality and commitment to diversity in education. Virtual, In-person and Hybrid programs.

Our CE programming includes:

- Formal CE speaker programs including Cultural Diversity and Social Justice, Supervision, Law and Ethics topics, as well as latest topical research!
- Annual Convention (Up to 7 CEs/CPDs; Upcoming 2024 Convention October 26th)
- Lunch & Learn 1.5 CE Education programs (free to members, up to 7.5 CE/CPDs a year)
- Bi-Annual Trust Risk Management Event (next event January 25, 2025)
- Diversity CE series presentations (free to members, up to 8 CE/CPDs a year)
- Access to our library of diverse, high quality, on-demand CE programs



Join Now and Get Involved!

Enjoy everything LACPA has to offer. Visit our website at www.lacpa.org and click "Join/Rejoin."



<https://lacpa.memberclicks.net/join-renew>

Contact Information:

LACPA Office 6345 Balboa Blvd.
Bldg. 2. Ste. 126, Encino, CA 91316

lacpa1@gmail.com www.LACPA.org

Follow and engage with LACPA on Facebook, Twitter @ LACPApsych, Instagram @ LACPA1945, Threads and LinkedIn!



2024-2025 MEMBERSHIP APPLICATION
LOS ANGELES COUNTY PSYCHOLOGICAL ASSOCIATION
 September 1, 2024 – August 31, 2025, MEMBERSHIP DUES

Full Member (Doctorate in psychology)	\$231
Post-Doctoral/Pre-Licensure (Recent doctoral graduate within the past seven years, Maximum two years at this level)	\$ 65
Early Career Member (Received doctorate within the past seven years, max four years at this level) Doctorate year received _____	
* First and Second Year at this Level.....	\$129
* Third and Fourth Year at this Level.....	\$194
Affiliate Member (Master's in a mental health field OR other professional wishing to support LACPA activities)	\$145
Emeritus Member (LACPA member for at least 15 yrs., most recently as Full Member, and age 70 or older)	\$ 77
Out-of-County/State Member (Lives and works outside of Los Angeles County)	\$145
Student Member - Undergrad or Graduate (<i>Pre-Doctoral, must submit proof of current student status with application</i>)	\$ 47

Application must be at the highest level for which the person is qualified.

OPTIONAL with Membership

Keep me on/Add me to the FREE LACPA Listserv (Available only with LACPA membership)

Find a Therapist Listing - Expires 8/31/25 *You must be a CA licensed Psychologist, MD, LMFT, or LCSW to be listed ...(\$50) + _____*

TOTAL ENCLOSED/AUTHORIZED\$ _____

GENERAL INFORMATION
(Please Print Clearly)

Name _____ Degree _____

Business Name _____

Business Address _____

City/State _____ Zip _____

Business Phone () _____ Fax () _____

Email _____ Mobile Phone () _____
Must provide to be on LACPA's Listserv

Professional Web Address _____
The Website you list must include your name and California license number.

Home Address _____ Home Phone () _____

City/ State _____ Zip _____

CA Psychologist/Therapist License No. _____ Year Received _____ Expires _____

Preferred Mailing Address Business Home

PROFESSIONAL ETHICS DECLARATION

I have read and agree to abide by the Code of Ethics of the California Psychological Association (identical to the Code of Ethics of the American Psychological Association).

Signature _____ Date _____

MAIL TO: LACPA, 6345 Balboa Blvd., #126, Encino, CA 91316 OR RENEW/JOIN ONLINE WWW. LACPA.ORG
818-905-0410

PLEASE MAKE CHECK PAYABLE TO LACPA OR COMPLETE THE CREDIT CARD INFORMATION BELOW.

Credit Card No. _____ Exp. Date _____

Three-digit security number: _____ Name as on Card: _____

Required: This credit card bill is received at this street number _____ city _____ zip code _____

This course is co-sponsored
by the **Los Angeles County
Psychological Association**
and **The Trust**.



SEQUENCE XII: NAVIGATING CHALLENGING CONVERSATIONS: ETHICS AND RISK MANAGEMENT



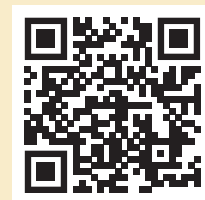
Saturday, January 25, 2025
Via Zoom Webinar
9:00 AM - 4:00 PM PT

Presented by
Daniel O. Taube, J.D., Ph.D.

Intermediate Level - 6.0 Live Ethics CE Credits
15% off your Trust Sponsored Professional Liability Policy premium
(for 2 consecutive years at policy renewal)

This Program will NOT be recorded

\$150 for Members, \$190 for Non-Members
<https://lacpa.memberclicks.net/trust2025>



For over two decades, The Trust has worked to educate and support psychologists in improving their ethics and risk management skills and strategies by providing live workshops, webinars, risk management consultation, and expanding resources. This 12th workshop in our Sequence series continues to emphasize applied, integrated and strategic methods to help you stay grounded in ethical principles and practices and to protect yourself from adverse disciplinary and legal actions.

The Trust Risk Management Consultants have culled subject matter from some 110,000 consultations provided to date to focus this workshop on problems practitioners often encounter. The overarching theme of Workshop 12 is on the ethics and risk management of navigating various types of challenging conversations that arise in professional practice. Specifically, topics will include: the possibly impaired or unethical colleague; race and microaggressions; record keeping and the Information Blocking Rule; mandated child abuse reporting; multiple relationships and conflicts of interest in collateral versus conjoint services; managing risks of cross-jurisdictional telepsychology; and the ethics and risk management of responding to patients/clients who engaging in stalking, threatening, or harassing behaviors.



Professional Liability Insurance Protection

For Psychologists, By Psychologists

Psychologists Are Our Focus

With **The Trust**, you're not just another policyholder among many other professional classes. Our **Trust Sponsored Professional Liability** insurance policy and continuing education programs are tailored to meet your needs as a psychologist at every stage in your career.

We Have You Covered

The Trust has proudly supported and protected psychologists for over 60 years. Only **The Trust** offers the **Advocate 800 Program** that provides free and confidential consultations with licensed psychologists that have extensive legal, ethical and risk management expertise — not a “claims expert” or other non-psychologist like other carriers.

Insuring Your Career, Ensuring Your Success

We know the challenges you face, and we're here to provide the personalized support and resources you need to ensure your continued success. Whether you're a student, a newly licensed practitioner, a seasoned clinician, or someone considering retirement, **The Trust's** financial security programs cover your entire life, not just your career.

Apply Today & Save Up to 25%

You'll receive a 10% discount your first year when you switch from another provider, plus an additional 10%-15% discount when you combine 6 CEs from any of **The Trust's** live events or on-demand webinars to save up to 25%!

Take the important step of protecting yourself by securing a **Trust Sponsored Professional Liability** insurance policy today! Visit trustinsurance.com or call (877) 637-9700.

*“More than half of Trust insureds have
been with us for 10 years or longer.*

*We're proud to be trusted
by more psychologists than any
other insurance provider and look
forward to protecting you, too!”*


INSURANCE PROGRAMS
www.trustinsurance.com | (877) 637-9700

* Insurance provided by ACE American Insurance Company, Philadelphia, PA and its U.S.-based Chubb underwriting company affiliates. Program administered by Trust Risk Management Services, Inc. For cost and complete details, call The Trust or visit www.trustinsurance.com.